



BLUE LINE MARKS ROUTE: Planning began 13 years ago on Edison's Valley-IvyGlen lines that will run from Menifee to Temescal Valley.

Work begins on backup power line; 2022 completion

Southern California Edison has begun construction on the **Valley-IvyGlen project**, when completed, will provide a backup power line to Temescal Valley now served by only one line.

The project calls for about 25 miles of above-ground, single-circuit 115kV subtransmission lines and fiber optic telecommunication lines to run from the Valley substation in Menifee. The lines will head in a westerly direction through Perris and Lake Elsinore, and continue into Temescal Valley, running north along De Palma Road adjacent to **Horsethief Canyon Ranch** and **Glen Eden Sun Club**.

The lines will cross the I-15 freeway north of Glen Eden and continue along Temescal Canyon Road. They will be placed

underground at about Indian Truck Trail and continue to the IvyGlen substation on Temescal Canyon Road near Maitri Road.

The current 30- to 80-foot tall wooden poles will be replaced with 115-foot steel poles. A mid-2022 completion date is anticipated.

Learn more about the project [HERE](#)

151 people offer comments on 1-15 Express Lanes Extension

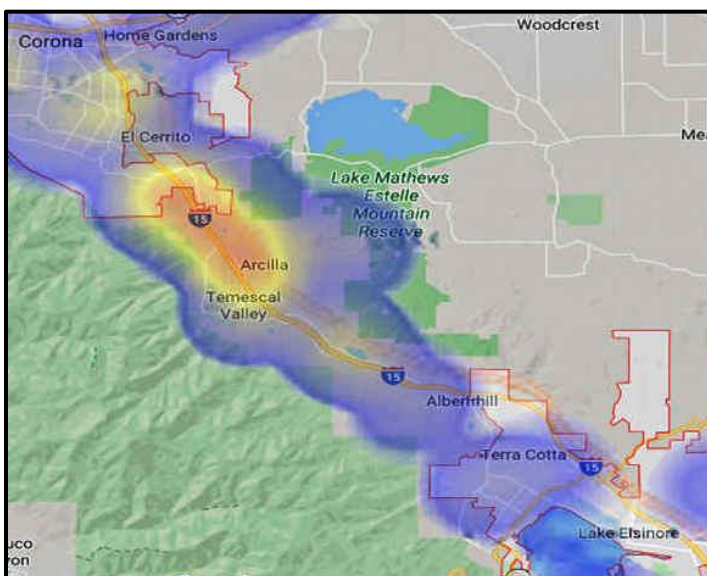
The Riverside County Transportation Commission has released the results of the scoping meetings held in November to solicit comments on the extension plans for the I-15 Express Lanes.

RCTC reports **151 comments** were received during the Oct. 21 to Nov. 22 scoping period, with Temescal Valley returning the most comments of the three communities within the project area. The 14.5 miles of Express Lanes will run south from Cajalco Road in Corona, through Temescal Valley to State Route 74 in Lake Elsinore.

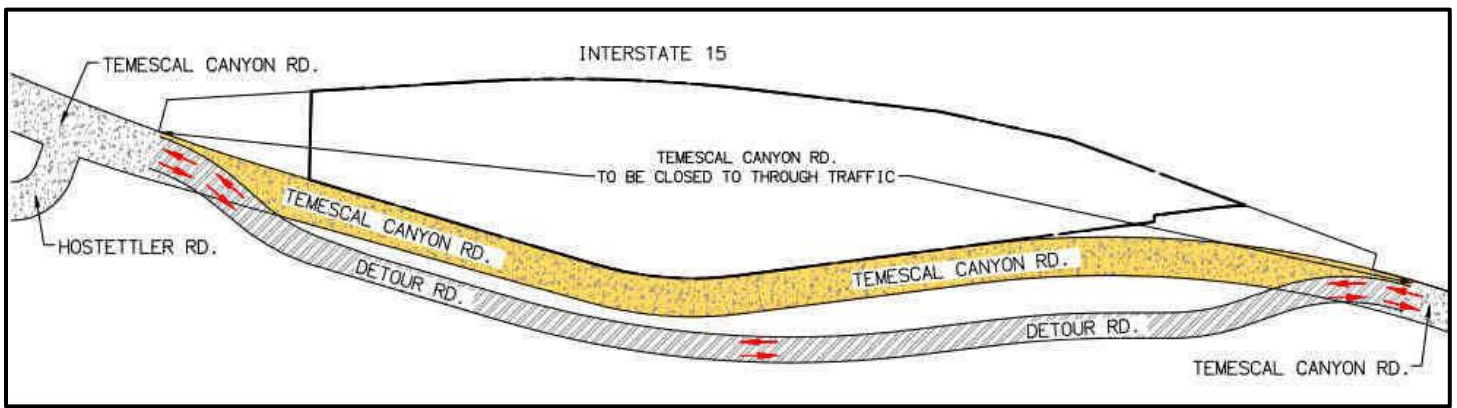
The comments, required by the **California Environmental Quality Act (CEQA)**, are being considered as RCTC and **Caltrans** conduct engineering studies and develop the draft environmental impact report. The report is expected to be released to the public for additional comments during 2022.

According to the RCTC website, construction could begin as early as 2025 if the agency is able to secure funding. The total project cost is estimated to be \$550 million to \$600 million.

Learn more about the scoping summary and read the comments [HERE](#)



HOT AREA: Heat map shows many of the 151 comments received by RCTC came from Temescal Valley



DETOUR COMING: Construction has begun on the RV & Self-Storage project on Temescal Canyon Road south of Hostettler Road.

Detour necessary to widen Temescal Canyon Road

By **DAN LONG**
Development Director
The Rancon Group

As many of you are aware, **The Rancon Group** in January obtained approval for a new state-of-the-art **RV and Self-Storage facility** along Temescal Canyon Road.

We have obtained our grading permit and you might have noticed construction activity taking place along Temescal Canyon Road between Hostettler Road and Lake Street.

As part of the construction, Rancon will be widening and realigning portions of Temescal Canyon Road. To safely complete the improvements, Rancon will be temporarily closing Temescal Canyon Road and providing a temporary detour road. Due to the challenges of this segment of the roadway, the detour is needed for the safety of the surrounding community, commuters and the construction crew.

This temporary detour could be in place for up to one year and Rancon will have traffic safety signs displayed as well as barriers during all phases of construction.

Please keep an eye out for the signs, slow down, respect all speed limits and plan ahead for potential delays while using this segment of Temescal Canyon Road. The safety of the community and the construction crews is Rancon's highest priority.

If you have any questions, please contact Dan Long at **951-200-2367** or dlong@rancongroup.com

FasTrak transponder misbehaving?

Motorists are wondering why their FasTrak transponder beeps when driving on the I-15 in the area of El Cerrito.

Toll equipment is being installed in the median and along the freeway shoulders to prepare for the anticipated opening of the 15 Express Lanes later this year. The equipment is undergoing testing but is not collecting information and tolls are not being charged. Also, 91 Express Lane users headed southbound on the I-15 are not being charged to use the 1.5 miles of new lanes extending to just past El Cerrito Road.

For information, contact RCTC Public Affairs Manager **Cheryl Donahue** at **951-787-7141** or cdonahue@rctc.org.

Local calls for sheriff service up, but crimes are down in June

Lt. Aaron Kent, with the **Lake Elsinore Sheriff's Station**, provided information on Part I crimes that occurred here during **May and June**.

Part I crimes include serious felonies and property crimes; Part II crimes are non-serious felonies and misdemeanors.

The station received **441 calls** for service from Temescal Valley during June – **78** more than received in May. Lt. Kent communicated in an email that calls for service have been increasing throughout all county areas with the highest number of increases attributed to alarm calls for service.

Fifteen calls in May were for Part I crimes: **eight** in June. There were no homicides, rape/sex crimes, robberies or theft from vehicles reported for the two-month period.

Here is the breakdown: **Assaults** – **2** in May and **0** in June. **Burglaries** – **0** and **1**. **Grand/Petty Theft** – **11** and **7**. **Vehicle Theft** – **2** and **0**.

There were **four arrests in May** – three felonies – receiving stolen property and two for domestic violence, and one misdemeanor for domestic battery.

June saw five arrests – two felonies – parole hold and burglary, and three misdemeanors – illegal marijuana cultivation and two domestic batteries.

There were **five vandalism** reported for May and **seven** for June. **Disturbing the peace** calls numbered **36** and **41**.

The Lake Elsinore station on the **4th of July** had **208 fireworks calls** from the unincorporated areas it serves. A fireworks-related blaze also was reported in the Cleveland National Forest off Indian Truck Trail.



JULY 4TH: Fire burns above Sycamore Creek but was quickly extinguished by firefighters. Photo by **TAMARA ECKENROD**



NEVADA HYDRO SIMULATION: Looking to the east from De Palma Road, south of the Shops at Sycamore Creek center and north of Glen Eden. Yellow building at right is the proposed lake switchyard. Lee Lake can be viewed behind the switchyard.

IT'S TIME TO SEND COMMENTS TO FERC

Deadline Aug. 15 for comments on environmental impact statement

The **Federal Energy Regulatory Commission (FERC)** is seeking scoping comments from the public as it begins to prepare the **Environmental Impact Statement** for the **Lake Elsinore Advanced Pump Storage (LEAPS)** project.

Nevada Hydro Company Inc. wants to build the project in the Cleveland National Forest with 32 miles of 500kV transmission lines strung on 150- to 200-foot steel towers.

The plan calls for water from Lake Elsinore to be pumped at night into a to-be-constructed reservoir in the Santa Ana Mountains above the lake and then returned by gravity to generate electricity through turbines.

One set of transmission lines – 13 miles in length, would run northwest across the Santa Ana Mountains then head east, crossing Temescal Valley and the I-15 to connect to Edison's Valley-Serrano lines that run across the Temescal Mountains. A switchyard will be constructed at Lee Lake. **Glen Eden, Sycamore Creek** and **Terramor** would be the closest communities to the lines.

The other set of lines would head southwest from the pumped storage facility and run 19 miles to connect with San Diego Gas & Electric lines.

Public comments submitted should address points outlined in the **Scoping Document** or environmental issues not included in the document.

View the Scoping Document [HERE](#)

ACTION NEEDED NOW

FERC strongly encourages electronic filing. The public can submit brief comments up to 6,000 characters, without prior registration, using the eComment system at:

<https://ferconline.ferc.gov/QuickComment.aspx>

Follow the directions on the page. It's best to prewrite your comments in a Word doc and then copy and paste into the eComment template. FERC prefers that comments be kept short and to the point. The first page of any filing should include docket number **P-14227-003**. You must include your name and contact information at the end of your comments.

Longer comments also can be submitted online, but registration is required at:

<https://ferconline.ferc.gov/FERCOOnline.aspx>

Comments also can be snail-mailed to:

**Secretary
Federal Energy Regulatory Commission
888 First Street NE
Washington, DC 20426**

Deadline for comments is Monday, Aug. 17

DON'T KNOW WHAT TO SAY? HERE'S HELP

The **WeAreTV Development Committee** with the **Sycamore Creek Community Association** and **Glen Eden Corporation** are submitting scoping comments to **FERC**. If you want to but don't know what to say, on the next page are the impacts the **LEAPS** project will have on Temescal Valley.

Use whatever you feel is most important.

Upcoming and recent development approvals

NEW COMMUNITY: A public hearing for the second phase of **The Highlands at Sycamore Creek** is on the **Board of Supervisors' agenda for Tuesday, Aug. 4.**

Approval is sought by the **Wayne Kiley Family** to build 79 single-family homes on 57.3 acres located south of Kingbird Drive and east of Towhee Lane. Also planned is a 3.95-acre nature park, a 6,657-square-foot passive park and two retention basins.

Comments on the project can be emailed to County Planner **Bret Dawson**, bdawson@rivco.org.

HORSETHIEF VILLAGE: The county **Planning Commission** last month voted to recommend to the Board of Supervisors the approval of a housing development at the northwest corner of De Palma and Horsethief Canyon roads. 229 single-family homes are proposed for the 49-acre property.

The development would have its own HOA and would include a 1.6-acre park with swimming pool, cabana and tot lot. Planned improvements to De Palma Road within the boundaries of the development include a parkway, sidewalk and community trail.

Next step is a public hearing before the Board of Supervisors at a yet-to-be-determined date.

CANNABIS BUSINESS: The county **Planning Commission** in June voted to recommend to the Board of Supervisors the approval of a Conditional Use Permit for a cannabis microbusiness at **23215 Temescal Canyon Road.**

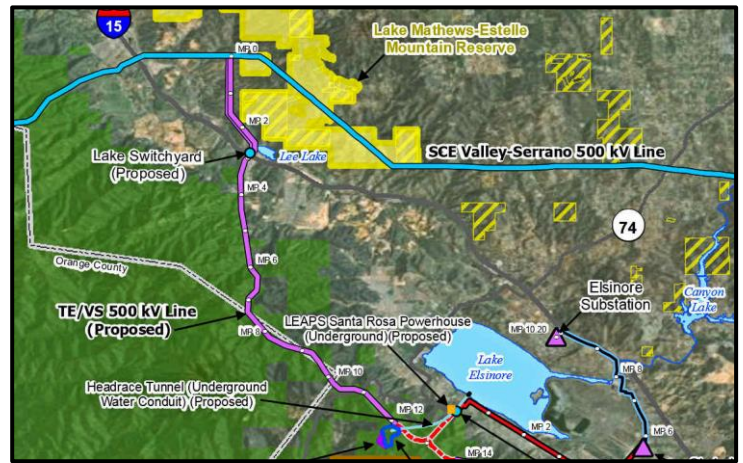
If approved, the permit would allow applicant **River Releaf** to sell, cultivate, manufacture and distribute cannabis in an existing 8,582-square-foot, two-story commercial building on the west side of Temescal Canyon Road at Dawson Canyon Road.

Next step is a public hearing before the Board of Supervisors at a yet-to-be-determined date.

100-FOOT CELL TOWER: A cell phone tower two years ago presented by AT&T at a **Temescal Valley Municipal Advisory Council** meeting as being 35-foot tall was approved last week at a county **Director's Hearing**. Except – the approval was for a 100-foot tower and in a different location than what was presented at the MAC meeting.

A few **Wildrose** and **Montecito Ranch** residents received a public notice from the county a couple of weeks prior to the hearing – the first indication that plans had changed. AT&T will place the tower, disguised as a eucalyptus tree, above Clay Canyon Drive in a grove of oak trees where the **Jameson Fire** burned in 2017. The property is owned by the **Temescal Valley Water District** and will be leased by AT&T. Originally, the tower was to be located closer to the TVWD water tank.

AT&T was seeking a variance because county ordinance allows cell towers to be only 50 feet in residential areas. The variance was granted despite objection from residents who said AT&T knew it was changing the height and location of the tower over a year ago and didn't bother to share it with the community. Concerns voiced about it being a high-risk fire area according to the county's Temescal Canyon Area Plan, and oaks being a county-protected tree, also were ignored.



LEAPS PROJECT: The purple line shows the path of the transmission lines from the Cleveland National Forest into Temescal Valley.

LEAPS IMPACTS

PUBLIC SAFETY: The transmission lines through Temescal Valley would traverse a "very high" wildfire susceptibility area, a 100-year flood and dam inundation zone, and a seismic activity area associated with the Elsinore Fault Zone. Weather-wise, the project lies in the Elsinore Convergence Zone noted for extreme weather patterns including tornados. The lines would cross both the I-15 freeway and Temescal Canyon Road, the only north-south evacuation routes for Temescal Valley in case of a major disaster. There are no east-west roadways into or out of the area. Downed lines across the freeway and/or Temescal Canyon Road would hinder residential evacuation efforts.

INHIBIT FIRE-FIGHTING EFFORTS: Temescal Valley is prone to wildfires. Aircraft are utilized to fight blazes, most notably the August 2018 Holy Fire, when thousands of residents were evacuated. The lines and towers would impede aerial firefighters in accessing an inferno. The transmission lines, towers and switchyard adjacent to Lee Lake would inhibit the aircraft's ability to draw water from the lake.

INHIBIT AREA GROWTH: Riverside County has approved land use and zoning changes to property adjacent to and under the planned transmission lines, including 196 acres of residential development and 73 acres of commercial/retail development. This much-needed development is at risk of being lost, thus adversely affecting the area economy and Temescal Valley's ability to become an incorporated city.

CONSERVATION: The lines would traverse land area within the Western Riverside County Regional Conservation Authority (RCA), jurisdiction. Construction of the towers and associated facilities would cause harm to some of the 146 species of endangered and threatened animals, birds, insects and plants protected by the RCA's Multiple Species Habitat Conservation Plan.

CULTURAL HERITAGE: The Temescal Valley area for centuries was populated by Luiseño and Juaneño Native American tribes, drawn to the area by the natural hot springs that flow here. There are numerous historical artifacts throughout the area. Grading for tower pads and construction of a proposed switchyard adjacent to Lee Lake could cause the loss of invaluable and precious antiquities. We strongly urge that Temescal Valley and the Lee Lake area be included in the Historic Properties Management Plan.

VISTAS: The transmission towers, lines and the construction of related facilities would impact the view from the I-15 freeway, which has been designated a State Eligible Scenic Highway.

EDISON PROJECT: Southern California Edison has begun construction on the Valley-IvyGlen 115kV subtransmission lines with completion expected mid-2022. These lines will cross the I-15 freeway almost exactly where the Nevada Hydro transmission towers and lines are proposed.

GOT A QUESTION? WE ASKED THE EXPERTS

Riverside County public health officials provide answers about COVID-19

We Are Temescal Valley, on its Facebook page, posts the county's COVID-19 information when the numbers are updated Monday through Friday. With each post, questions are usually asked and, oftentimes, are asked again days later.

We submitted a list of the most frequently asked questions to **Jeff Greene**, chief of staff for county **Supervisor Kevin Jeffries**. Greene, along with county Public Health Director **Kim Saruwatari** and Public Health Officer **Dr. Cameron Kaiser**, provided answers.

Q. How are confirmed cases counted? If one person takes three separate tests and they all come back positive, are the tests counted as three positive cases?

A. All case numbers reflect unique individual patients. Patients who test positive for COVID-19 more than once are only counted and recorded as one case.

Q. Is it at all possible for someone to make a testing appointment, not show up for the test and then receive a phone call stating they tested positive?

A. That should not ever happen, and there are procedures to ensure the people being tested are the people who registered for the appointment and are the people who receive the results, but I won't claim that human error is impossible.

Q. When testing was opened to everyone, has the county kept track of how many positive test results were from asymptomatic people?

A. We have not been able to track that in any meaningful way, particularly since people who were asymptomatic when they tested positive may later have developed symptoms, and most who develop symptoms are not hospitalized.

Q. When people from other counties come here to be tested and they test positive, is it reported under Riverside County's numbers?

A. Positive cases are always reported by county of residence, not county where they were tested.

Q. What about all the cases we are taking in from Imperial County. Aren't they inflating our numbers?

A. Same for the Imperial County transfers. They count against our hospital beds, but not against our total cases. Under a mutual aid agreement several counties are receiving patients from Imperial County which has only two hospitals. Riverside County has been ranging from about four to seven people in that category for weeks now, so they have not been a serious contributor to our capacity problems.

Q. How are the number of recovered cases determined? Are the positive cases required to take another test and not be declared recovered until they test negative?

A. The number of recoveries is updated daily based on the number of living, confirmed cases who no longer have symptoms and have completed isolation requirements as determined by ongoing Public Health investigation operations.

TAKE THE PLEDGE TO STOP THE SPREAD!

SPACE **COVER** **WASH**

I PLEDGE TO **WEAR FACE COVERINGS** OR MASKS TO SLOW THE SPREAD OF CORONAVIRUS IN RIVERSIDE COUNTY. BY WEARING FACE COVERINGS OR MASKS, I AM JOINING THE FIGHT AGAINST COVID-19 AND DOING MY PART TO PROTECT MY FAMILY, FRIENDS AND NEIGHBORS.

IN ADDITION TO WEARING MASKS, I WILL KEEP **SIX FEET OF DISTANCE** FROM PEOPLE I DON'T LIVE WITH, AVOID PARTIES OR LARGE SOCIAL GATHERINGS, FREQUENTLY **WASH MY HANDS** AND VISIT BUSINESSES THAT TAKE SAFETY STEPS TO PROTECT CUSTOMERS AND EMPLOYEES.

BY WORKING TOGETHER, WE CAN SLOW, THEN STOP THE SPREAD OF COVID-19 IN RIVERSIDE COUNTY.

I PROMISE

TAKE THE PLEDGE [HERE](#)

Q. If recoveries are not confirmed by a negative test result, isn't it possible people have recovered but were never included in the recovery numbers, thus making the number of recoveries undercounted?

A. We clear cases pretty aggressively – we don't call everybody after the fact and make sure they've recovered clinically because there is no human way to do so at this point, and for many low-risk cases we assume recovery. If anything, we are probably overcounting the recovered population (of those we test), as a result.

Q. Why are the California Department of Public Health's positive case numbers for Riverside County always higher than what the county shows?

A. It has to do with the timing of when data are pulled. They pull their data in the evening and we pull ours in the morning. Additionally, we go through a more extensive process to make sure that the cases in our count are actual Riverside County residents.

MORE COVID Q&A

Q. I have been told to add the deaths and recoveries and subtract that number from the confirmed cases to get the number of active cases. Based on today's number, I can't believe there are over 17,000 still active cases in the county.

A. We think the number probably is in the ballpark. Those people are going to be at various stages of communicability, but yes, if they are not in the hospital and they are not cleared, they're supposed to be at home until they get better – all 17,000 of them. We know many are not doing that, plus there are those who are not yet detected. That is why we are adding several hundred to our case numbers every day.

More to the point, though, the number was always about the recoveries of those we had detected were positive, and counties are getting pushed to report this number. (NOTE: There are counties that do not keep track of recoveries.) We think retracting it at this point would be worse, even if acknowledging the figure is less than perfect. It gives a ballpark estimate of how much virus is still probably circulating and that is helpful to know.

Q. Has it yet been determined, if antibodies show you have had COVID, you can/cannot get it again?

A. There is some evidence to suggest that you cannot be immediately reinfected, and those who appeared to relapse may have never actually cleared it in the first place. However, it is still an open question how long this immunity lasts and how good it actually is. We probably will not know for a while.

Q. With the county's antibody testing program up and running, will people testing positive for antibodies be included in the daily tally of COVID cases as their results become known or will it be a separate tally? Also, what about the free antibody test offered by blood banks when people donate – are these being tracked? Are those results being included in the daily case numbers?

A. Antibody testing is not included in the daily tallies (either for us or anywhere else). I imagine we would report our findings on our own study. Note -- that while we don't count antibody tests as daily tests, it is a state requirement that all tests, including antibody tests, be reported to the local jurisdiction. However, the numbers we have for antibody tests performed outside the county system are unreliable due to differences in test characteristics and some non-approved assays being (improperly) used by some providers. So, while we receive this data, it's all over the place. Similarly, antibody tests cannot be used to determine public health clearance, so it is not a test we routinely offer since we are concentrating on detecting new cases – which antibody assays cannot do.

Q. When will results from the county's antibody testing program be available?

A. We're still analyzing the results but basically the study indicated more than 100,000 county residents could have been infected by the virus. People were selected randomly for the study and 1,726 individuals were tested with 101 showing they had developed antibodies for COVID-19, a positivity rate of 5.9 percent. 1,621 tested negative and four had unclear results. Based on that data and the population of the county, it is estimated there have been between 118,000 and 175,400 infections in Riverside County.

Health officials need your cooperation with contact tracers

Riverside County health officials are asking coronavirus patients to provide critically needed information when they are contacted by health investigators working to slow the spread of COVID-19.

Hundreds of contact tracers are working as part of Riverside County's response to the epidemic that has infected more than 36,000 residents and contributed to almost 700 virus-related deaths. The contact tracers reach out to those who test positive for COVID-19 and attempt to determine the source of the infection, who the patient may have been in contact with and where the patient may have visited. This information is used to help slow the spread of coronavirus by reaching out to those who may have been infected without identifying the infected patients.

“Unfortunately, in many cases, the person who is contacted is not providing the information that is being sought,” said **Kim Saruwatari**, director of Riverside County Public Health. “This information is critical as we work to slow and eventually stop the spread of coronavirus. It is understandable that patients may be reluctant to discuss sensitive issues, but it is very important that this information is provided.”

Saruwatari emphasized the information that is gathered is not shared with other governmental agencies or with those who are contacted by case investigators. Health officials have used the same techniques for years while investigating health issues like tuberculosis and sexually transmitted diseases.

“We don't share individual information and we don't ding people for being honest,” said **Dr. Cameron Kaiser**, Riverside County public health officer. “The only thing new about what we're doing now is the scale of it. We know how to keep your information private and we ask only what we need to know. But we also need to understand where our hotspots are so we can concentrate on those regions and sectors, and that can't happen if we don't find out what we need to.”

County of Riverside Coronavirus Information Line

Dial: 2-1-1

General information -- no medical advice

Q. At one point, the county created an online form where people could report businesses that had not been cleared to reopen. What happened to the form, and will it be used again to assist the enforcement efforts of the **Environment Health Department**? Has EHD began enforcement efforts yet?

A. Environmental Health is enforcing the rules as it inspects restaurants and bars, and also based on complaints. The phone number to report violations is **951-351-6866**. I believe the county email address to report violations is still DOCLiaisonOfficer@rivco.org. Cal-OSHA is also responding to workplace COVID violations, which may be the most effective agency for compliance with businesses: <https://www.dir.ca.gov/dosh/Complaint.htm>

OPEN



Retail

Manufacturers

Logistics

Childcare for those outside of the essential workforce

Offices for critical sectors

Car washes, pet grooming, and landscape gardening

Short-term vacation rentals

Hotels, motels, inns (for tourism and travel)

Campgrounds & outdoor recreation

Schools, day camps and daycares

Libraries

Pro-sporting events (no live audiences)

Filming for TV and Music

Outdoor operations for restaurants; wineries & tasting rooms; movie theaters; museums and galleries; zoos; family entertainment centers and cardrooms (Eff. July 1, 2020)

Outdoor operations for shopping malls; including swap meets; fitness centers; worship services; weddings and cultural ceremonies (Eff. July 13, 2020)

Outdoor operations for personal care services including hair salons and barbershops; nail salons; facial and esthetician services (except electrology); shaving; waxing, threading and massage therapy. (Eff. July 20, 2020)

! CLOSED !

Bars that don't serve meals (Eff. June 30, 2020)

Youth and team sports; sports with live audiences

Concert venues

Indoor operations for personal care services including nail salons; facial and esthetician services; shaving; waxing and threading; massage therapy (Eff. July 13, 2020)

All operations for electrology, body art, tattoo and piercing (Eff. July 13, 2020)

Indoor operations for restaurants; wineries & tasting rooms; movie theaters; museums and galleries; zoos; family entertainment centers and cardrooms (Eff. July 1, 2020)

Indoor operations for shopping malls; including swap meets; fitness centers; worship services; weddings and cultural ceremonies; offices for non-critical sectors; hair salons and barbershops (Eff. July 13, 2020)

Wedding & cultural ceremony receptions



YOUTH RIDE RTA BUSES FOR FREE ALL YEAR* LONG

Beginning this summer, anyone 18 and younger can ride RTA buses for free. Just flash your ID for unlimited rides anywhere RTA buses go, anytime they operate. And yes, you can take your bike or skateboard with you on the bus.

Parents, rest assured that we'll get your kids where they need to go safely. With trained drivers, clean vehicles, and a commitment to customer safety, we always put safety first. Plus, there's comfortable seating, free Wi-Fi service and USB charging ports to make the ride even better. Did we mention that it's free?

Anyone under 18 can ride for free from August 1, 2020 to June 30, 2021. To ride for free, simply show a valid school ID, an RTA Youth ID card, a California driver's license or any state-issued ID showing the rider is under 18.

* FREE RIDES AUGUST 2020 – JUNE 2021. Dates subject to change.

PLAN YOUR TRIP TODAY

VISIT US

RiversideTransit.com

CONTACT US

Customer Information Center
at (951) 565-5002

WE'RE OPEN

Until 10 p.m. every day

STAY SAFE

RTA is asking customers to practice social distancing, wear face masks and travel for essential trips only.

RTA
Riverside Transit Agency

SUMMER PET SAFETY TIPS

Beat the heat and keep your pets safe this summer!



Types of pets most susceptible to heatstroke



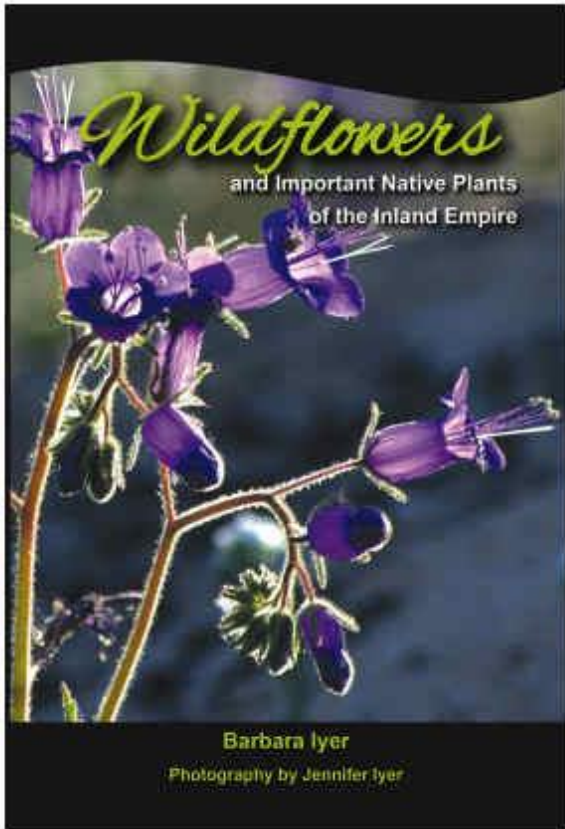
Air Temperature	Asphalt Temperature
77°	125°
86°	135°
87°	143°

Pet Safety Tips

- Try to avoid prolonged exposure to hot asphalt, sand or similar surfaces which can burn your pet's paws.
- Walk your pet on the grass if possible.
- Avoid strenuous exercise on extremely hot days. Take walks in the early mornings or evenings, when the sun's heat is less intense.



BOOK ORDER FORM



Wildflowers and Important Native Plants of the Inland Empire

By Barbara Iyer
 Field Guide/Nature • 6.5 x 9.5 inches
 492 color photos • 220 pages
 ISBN: 978-1-7349298-0-5 • \$17.78 plus tax, S/H

Wildflowers and Important Native Plants of the Inland Empire will help you identify plants by the color and size of their flowers.

The book provides easy to use features:

- full color photos of each unique plant
- park locations for seeking wildflowers
- a comprehensive glossary and drawings to help with unfamiliar terms.

This book has more than 80 species descriptions covering the plants you're most likely to see in southern California's inland valleys and foothills of western San Bernardino and Riverside Counties. Plant descriptions include information about Native American, landscape, and wildlife uses of plants. Chapters include information about dangerous plants, plant communities, and plant conservation.

About the Author

Loving the jungle-wilds of the Santa Ana River, Barbara Iyer worked nineteen years at the Rubidoux Nature Center sharing nature with people via school field trips, summer camps, and Butterfly Days. Since retiring, she volunteers at Hidden Valley Nature Center, leads wildflower walks at Harford Springs Park, and explores local nature trails with her children, friends, and her dog Shadow.

Barbara holds a BA in Political Science with a teaching minor in life science (biology) and a teaching credential from UC Berkeley.

Books can be mailed to you or picked up Monday through Friday from 8 a.m. to 3:30 p.m. Please call (951) 683-7691 Ext. 201, to arrange for pick up, and if paying in cash, please bring exact change. More information at our website: RCRCD.org

Book sales help RCRCD fund additional printings!

Order books from the Riverside-Corona Resource Conservation District for \$17.78 each, plus \$3.66 for postage/handling of single copies (book rate). Add \$1.00 S/H for each additional book. For questions and rush orders, please call: (951) 683-7691 Ext. 201.

Mail form and check (payable to RCRCD) to RCRCD, 4500 Glenwood Dr, Bldg. A, Riverside, CA 92501. Fax: (951) 683-3814

NO. OF BOOKS	COST AMT.	+8.75% SALES TAX	*POSTAGE+ HANDLING	TOTAL	DONATION (OPTIONAL)	TOTAL
--------------	-----------	------------------	--------------------	-------	---------------------	-------

Name: _____ Amount enclosed: _____

Address: _____

Phone: _____ E-mail: _____



\$0 AMAZING

THE ZERO DOLLARS RIDE PROGRAM

COLLEGE STUDENTS RIDE FREE

All Year Long* With The Token Transit App

Beginning this fall, college students can ride RTA buses for free. With your mobile Go-Pass you'll get unlimited rides anywhere RTA buses go, anytime they operate. And yes, you can take your bike or skateboard with you.

Getting your mobile pass is easy. When you register for classes make sure you provide the school your mobile phone number. Then one week before classes start, you will receive a text message from Token Transit with a link to download the pass. After that, simply use your mobile pass whenever you board and enjoy the ride.

With trained drivers, clean vehicles, and a commitment to customer safety, say hello to a better way to travel. Plus, there's comfortable seating, free Wi-Fi service and USB charging ports to make your trip even better.

Students at Moreno Valley College, Mt. San Jacinto College, Norco College and Riverside City College ride for free with the Token Transit app. All registered students will get a text with direction for signing up. No need to show your school ID. Just download the app and show your digital ID to the driver when you board.

*AUGUST 1, 2020 – JUNE 30, 2021. Dates subject to change.

PLAN YOUR TRIP TODAY

VISIT US

RiversideTransit.com

CONTACT US

Customer Information Center
at (951) 565-5002

WE'RE OPEN

Until 10 p.m. every day

STAY SAFE

RTA is asking customers to practice social distancing, wear face masks and travel for essential trips only.



COUNTY OF RIVERSIDE

COVID-19 BUSINESS ASSISTANCE GRANT PROGRAM



ELIGIBLE USE OF FUNDS

- ✓ Payroll/Employee retention
- ✓ Working capital
- ✓ Purchase of Personal Protective Equipment
- ✓ Rent or mortgage payments
- ✓ Paying vendor invoices



INELIGIBLE BUSINESSES

- ✓ Public entities
- ✓ Passive income real estate investments
- ✓ Businesses that have accessed the Paycheck Protection Program (PPP)
- ✓ New/Startup Businesses with less than one year of operating history (as of 3/1/20)
- ✓ Cannabis-related
- ✓ Casinos/gambling establishments
- ✓ Adult entertainment related

\$10,000 GRANTS

Apply at www.RivCoBizHelp.org

Grants are awarded on a first-come, first-served basis.

Applications will be accepted beginning on June 29th at 5pm until August 31st at 5pm.

ELIGIBLE BUSINESSES

- ✓ **NEW** - Sole Proprietors that do not have employees
- ✓ **NEW** - Businesses that received the SBA Economic Injury Disaster Loan or advance
- ✓ Private For-Profit
- ✓ Business must be in Riverside County
- ✓ Must have experienced a financial hardship as a result of COVID-19
- ✓ Small businesses with less than 50 employees
- ✓ Operating for a minimum of one-year as of March 1, 2020

RIVERSIDE COUNTY
BUSINESS & COMMUNITY SERVICES
BIZINFO@RIVCO.ORG



VISIT WWW.RIVCOBIZHELP.ORG
FOR MORE INFORMATION

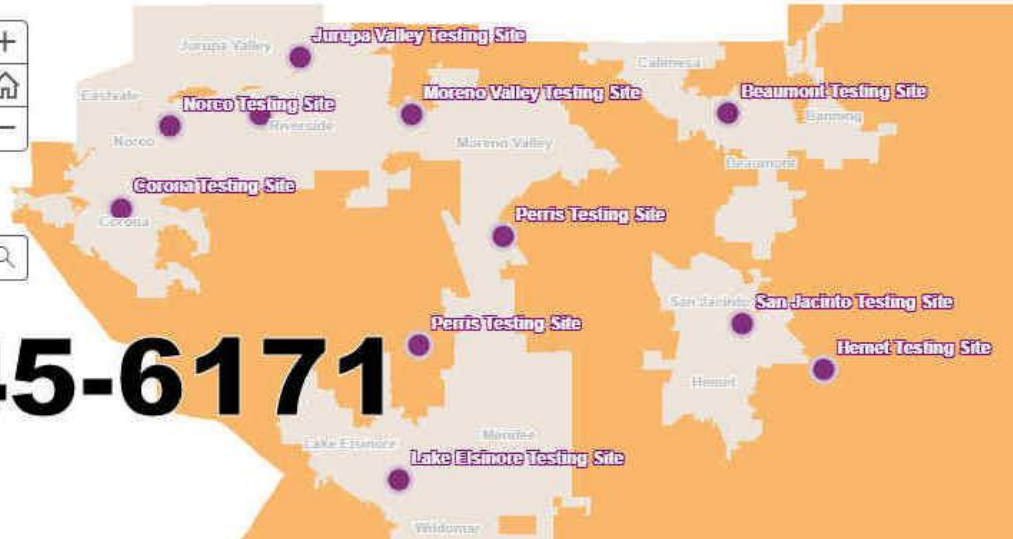
COVID-19 Testing Locations

Testing Locations

What You Need to Know

FAQs

Make an appointment. Click on a location on the map for more information.



800-945-6171



Novel Coronavirus COVID-19 Testing

Cathedral City @ 33520 Date Palm Drive

Corona @ 921 S. Belle Avenue

Indio @ 46350 Arabia Street (Drive-thru)

Lake Elsinore @ 500 Diamond Drive (*Make appointment online: www.projectbaseline.com/study/covid-19 or call 800.945.6171)--Drive-thru

Moreno Valley @ 21401 Box Springs Road

Perris @ 18700 Lake Perris Drive (Drive-thru)

Riverside @ 6115 Arlington Avenue
(Closing: May 30; Drive thru)

Riverside @ 5261 Arlington Avenue
(Opening June 2; Drive-thru)

San Jacinto @ 790 S. State Street

Beaumont @ 390 Oak Valley Parkway

Desert Hot Springs @ 12-800 W. Arroyo Drive

Hemet @ 43935 Acacia Avenue

Jurupa Valley @ 5293 Mission Blvd.

Mecca @ 91391 66th Avenue

Norco @ 3737 Crestview Drive

Perris @ 21565 Steele Peak Drive

Temecula @ 41000 County Center Drive

Appointment required.
Call **800.945.6171.**



Appointment required. Call
888.634.1123 or visit
<https://lhi.care/covidtesting>.



Coping With Stress During Infectious Disease Outbreaks

Riverside University Health System – Behavioral Health supports the behavioral health and wellbeing of Riverside County. We realize that news of the outbreak of an infectious disease can raise concerns and increase the stress of everyday life – even though the location of the outbreak may be far away, and you fully understand that there is a very low risk of getting sick. These are very normal reactions and these concerns can become larger if you have family and friends in parts of the world experiencing the outbreak or if you know of people who are doing extensive travel.

It is important to remember that you need to care for your own physical and mental health at times like this – and that support and resources are available if you feel a need for help or talk to someone.



WHAT YOU CAN DO TO HELP COPE WITH EMOTIONAL DISTRESS

1. Manage Your Stress

- Stay informed. Refer to credible sources for updates on the local situation.
- Stay focused on your personal strengths.
- Maintain a routine.
- Make time to relax and rest.

2. Be Informed and Inform Your Family

- Become familiar with local medical and mental health resources in your community. Attend community meetings for resources/education.
- Avoid sharing unconfirmed news about the infectious disease to avoid creating unnecessary fear and panic.
- Give honest age-appropriate information to children and remember to stay calm; children often feel what you feel.

3. Connect with Your Community

- Keep contact with family and friends.
- Join community and/or faith groups.
- Accept help from family, friends, co-workers and clergy.
- Reach out to neighbors and friends with special needs who may need your help.

4. Reach Out and Help

- If you know someone affected by the outbreak, call them to see how they are doing, and remember to keep their confidentiality.
- Consider an act of kindness for those who have been asked to practice social distancing, such as having a meal delivered or offering to drop off homework at their doorstep.
- Locate and volunteer at a charity or organization near you.
- Encourage friends and family to get involved with you.

5. Be Sensitive

- Avoid blaming anyone or assuming someone has the disease because of the way they look or where they or their families come from.
- An infectious disease is not connected to any racial or ethnic group; speak up in kindness when you hear false rumors or negative stereotypes that foster racism and xenophobia.

Consider seeking professional help if you or a loved one are having difficulty coping.

Be Proactive!

1. Stay informed with information from credible sources.
2. Stay connected with friends, family, and community groups.
3. Help others in need by volunteering and donating time and resources to trusted organizations.
4. Keep a positive attitude

Resources

- [Call 2-1-1](#) referrals for health and social services
- Behavioral Health CARES Line (800) 706-7500
- Substance Use CARES Line (800) 499-3008
- [24/7 Mental Health Urgent Care](#)
 - Riverside (951) 509-2499
 - Palm Springs (442) 268-7000
 - Perris (951) 349-4195

Riverside University Health System - Public Health

www.rivcoph.org/

or call 2-1-1 for more information

COVID-19 Resources

RIVERSIDE COUNTY CORONAVIRUS WEB PAGE

This page has all the latest information – data, numbers, statistics, resources, news releases, videos and more, and is updated daily:

<https://www.rivcoph.org/coronavirus>

RIVERSIDE COUNTY PUBLIC HEALTH DEPARTMENT FACEBOOK PAGE

**County of Riverside
Coronavirus Information Line
Dial: 2-1-1**
General information -- no medical advice

ARE YOU A BUSINESSOWNER?

<https://rivcoccsd.org/covidbizhelp>

ARE YOU UNEMPLOYED?

<https://www.rivcoworkforce.com/COVID-19Resources.aspx>

ARE YOU A STRESSED?

<https://www.rcdmh.org/Coronavirus>