



OPEN NOW! People show support of a proposal by Supervisor Jeff Hewitt presented at the Sept. 22 Board of Supervisors meeting. Seventy-three of the 75 speakers asked that the county defy the state's orders and reopen all businesses in Riverside County. Photo by Watchara Phomicinda, The Press-Enterprise/SCNG

Will supervisors defy state orders and reopen county businesses?

By **1st DISTRICT SUPERVISOR KEVIN JEFFRIES**
From the September edition of *Jeffries Journal*

With COVID hospitalizations having fallen to April levels, and Riverside County having moved into the improved Red Tier level, many local businesses have reopened and/or moved back indoors, albeit with limited indoor seating in most cases.

Many local residents have called upon the Board of Supervisors to “lift” the remaining restrictions on businesses, churches and others. The Board will hold a follow up discussion on this matter on Tuesday, Oct. 6 (sometime after 9:30 a.m.).

For those advocating to lift the restrictions, the single biggest hurdle for such an effort is that the County of Riverside has NO county issued restrictions to lift on businesses, churches, schools, etc. All restrictions are imposed by the State of California. Local counties and cities cannot legally lift restrictions issued by a higher level government agency (only courts can do that), and the school districts will determine when they will open schools once the Governor allows them to do so -- not the county.

If the County did tell business owners that they could fully open and to disregard state orders, local cities (where 70% of businesses are located) and the State could still enforce their own regulations.

Additionally, for any professionals or businesses who are licensed by the State or have an ABC license, the personal or business licenses could be revoked or suspended by the State.

Cal/OSHA is another potential legal hazard for employers defying state orders.

CONTINUED NEXT PAGE

Where to vote; Who's running for office locally



Ballots are in the mail, and unlike past elections, there are additional options on how to cast your vote during the **Nov. 3 Presidential Election**.

If you regularly vote by mail, fill it out – don't forget to sign the envelope and mail it – no postage is necessary. Voters are encouraged to mail ballots early to ensure your vote is included in Election Night results. Ballots must be **postmarked** by Election Day, **Nov. 3** and **received** no later than **Nov. 20**.

Don't trust the mail? Ballots can be filled out and deposited at secure **Ballot Drop-Off** boxes. The drop box location for Temescal Valley is at **Trilogy, 24503 Trilogy Parkway**. Ballots will be accepted from **10 a.m. to 3 p.m., Oct. 5 through Nov. 2**, and from **7 a.m. to 8 p.m. on Election Day**. Dropped off ballots also do not require postage.

Polls this year are called **Voting Assistance Centers**. There are two such centers designated for Temescal Valley -- **Luiseno School** in Horsethief Canyon Ranch, **13500 Mountain Road** and **Temescal Valley Elementary School** in Wildrose Ranch, **22950 Claystone Ave**.

Unlike normal polling places that only are open on Election Day, the centers will accept in-person voting from **9 a.m. to 5 p.m., Oct. 31 through Nov. 2**, and from **7 a.m. to 8 p.m. on Election Day**. Ballots also can be filled out in advance and deposited at the Voting Assistance Centers. Safety rules have been issued to vote in person.

VOTING LOCATION SAFETY CHECKLIST

- Wear a face covering** while at the voting location.
- Keep 2 arms' length distance** from other people.
- Wash hands** before and after entering the voting location.
- Use hand sanitizer** after touching doors or voting equipment.
- Bring a ballpoint pen** to avoid touching high-contact surfaces.

Local elections appearing on the ballots of Temescal Valley residents include **US Representative 42nd District**, **State Assembly 67th District** and **Corona-Norco Unified School District Trustee Area 5** (for voters not within the boundaries of the Lake Elsinore Unified School District). Water district elections include **Elsinore Valley Municipal Water District Division 4** (for residents living in California Meadows, Butterfield Estates and Horsethief Canyon Ranch), and **Western Municipal Water District** (for voters in some areas of northern Temescal Valley).

**CANDIDATES IN THESE ELECTIONS
ARE LISTED ON THE NEXT PAGE**

JEFFRIES' JOURNAL ...

FROM PREVIOUS PAGE

Numerous lawsuits have been filed across the State to challenge the restrictions, but to date, no rules have been overturned in California. I believe a brief review of the lawsuits and their merits will occur at our meeting on Tuesday.

It is important to note that there is no proposal before the Board to lift mask, social distancing or sanitizing requirements. The COVID response issue has our residents pretty-well divided.

Do you want Supervisor Jeffries' newsletter emailed to you each month? Subscribe [HERE](#)

229 homes OK'd for Horsethief area

The county Board of Supervisors on Sept. 22 approved a housing development at the northwest corner of De Palma and Horsethief Canyon roads. 229 single-family homes are planned for the 49-acre property which more than a decade ago was approved for 325 dwelling units, including 210 townhomes.

Traffic studies estimated the reduction of 96 homes will decrease the number of daily trips on local roads by 590 – from 2,752 trips as originally approved to 2,161.

Planned improvements to De Palma and Horsethief Canyon roads along the frontage of the development include a parkway, sidewalk and community trail. The developer also will pay "fair share contributions" toward future traffic signals at Horsethief Canyon/De Palma and De Palma/Glen Eden roads.

The one- and two-story homes will be built on lots with minimum sizes of 3,619 square feet for 126 homes and 4,000 square feet for 103 homes.

The development will have its own HOA and will include a 1.6-acre park with swimming pool, cabana and tot lot. To not confuse the new development with the Horsethief Canyon Ranch Community Association, the developer has agreed to change the name from Horsethief Village to a yet-to-be determined name, according to Joel Morse of T&B Planning, Inc. It's unknown when grading and construction will begin on the development.

US Representative, 42nd District

KEN CALVERT (Republican)

U.S. Representative

[Ballotpedia](#)
[Voter's Edge](#)
[Website](#)
[Facebook](#)



WILLIAM 'LIAM' O'MARA (Democrat)

University Professor /

Historian

[Ballotpedia](#)
[Voter's Edge](#)
[Website](#)
[Facebook](#)



State Assembly, 67th District

JERRY CARLOS (Democrat)

Commissioner /
Business Owner

[Ballotpedia](#)
[Voter's Edge](#)
[Website](#)
[Facebook](#)



KELLY SEYARTO (Republican)

Mayor, City of
Murrieta

[Ballotpedia](#)
[Voter's Edge](#)
[Website](#)
[Facebook](#)



Elsinore Valley Municipal Water District Division 4

ASUR 'ACE' VALLEJOS

Retired

[Voter's Edge](#)
Website: None
[Facebook](#)



PHIL WILLIAMS

EVMWD Director

[Voter's Edge](#)
[Website](#)
[Facebook](#)

CNUSD Trustee Area 5

LORRAINE MEYERS

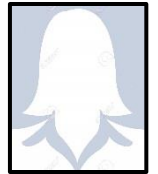
Customer Service

Representative

[Ballotpedia](#)
[Voter's Edge](#)

Website: Unknown

Facebook: Unknown



BILL POLLOCK

Incumbent

[Ballotpedia](#)
[Voter's Edge](#)
[Website](#)
[Facebook](#)

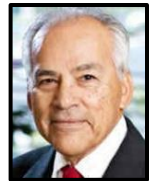


Western Municipal Water District Division 5

S.R. 'AL' LOPEZ

Board Director /
Businessman

[Voter's Edge](#)
Website: Unknown
[Facebook](#)



EUGENE MONTANEZ

Small Business
Owner

[Voter's Edge](#)
[Website](#)
[Facebook](#)



FAUZIA RIZVI

Water Consultant /
Engineer

[Voter's Edge](#)
[Website](#)
[Facebook](#)



SCOTT S. WILSON

Chief Executive
Officer

[Voter's Edge](#)
Website: None
Facebook: None



To contact him
about his candidacy:

info@electableadvertising.com

WHY SHOULD I GET TESTED -- I'M NOT SICK?

Public health officials explain how testing plays into state's reopening plan

“Get tested!” It has become the mantra of county public health officials. But why? We submitted a list of questions about testing to **Jeff Greene**, chief of staff for county **Supervisor Kevin Jeffries**. Greene, along with review by county Public Health Director **Kim Saruwatari** and Public Health Officer **Dr. Cameron Kaiser**, provided answers.

Q. Why should people get tested if they have had no contact with an infected person or have no symptoms of possible infection?

A. Personal Gain: If you work in a high risk, high public contact job, it is a good idea to be tested regularly, even if you have no symptoms or are unaware of being in contact with someone who was infected. While there is little likelihood you will be infected if you have not been going out and have no known contact with an infected person, most people have had at least some contact with others whose condition is unknown. It might particularly be useful to know if you are planning to visit an elderly or otherwise “at risk” family member or friend that has otherwise been isolated, to give you both peace of mind.

Public Health: Evidence indicates asymptomatic (and particularly pre-symptomatic) carriers can unknowingly infect others before they learn they are themselves carrying the disease. The more people test, the faster we will catch those who are COVID positive, and the fewer other people they will infect.

“For the Cause”: Governor Newsom’s standards for opening more activities and businesses requires us to test large numbers of the population and also that a specific low percentage of people being tested are positive. If only those who really think they are sick get tested, we will have neither the numbers of testers the state requires, nor the low “positivity rate” the state requires.

Q. What is “positivity rate” and why is the state placing so much emphasis on it?

A. The positivity rate is a simple formula of the number of positive COVID tests divided by the total number of tests. During the spike in July, Riverside County’s positivity rate was as high as 20%, meaning one in five people taking the test were positive. Some of that was because case rates were growing, and some was because fewer people were taking the test generally. The Governor and the California Department of Public Health have decided to use the positivity rate as one of two factors (the other being the number of new cases as a percentage of population) that is used to determine what businesses and activities are permitted in a county. We have recently dropped below an 8% positivity rate, which helped us qualify for the “Red Tier” of openings. To move to the “Orange Tier” of openings, we have to get below 5% positivity rate. This will only be possible if we continue to observe COVID-safe behaviors to drive down the numbers of new cases AND have as many people testing as possible.

Positivity rate is most meaningful when a good sample of the population is tested. It is certainly harder to get people with lower risk or few symptoms to test, but for now, it is 50% of the



Novel Coronavirus COVID-19 Testing

Indio @ 46350 Arabia Street (Drive-thru)

Lake Elsinore @ 500 Diamond Drive (*Make appointment online: www.projectbaseline.com/study/covid-19 or call 800.945.6171)–Drive-thru

Moreno Valley, CrossWord Christian Church @ 21401 Box Springs Road

Perris @ 18700 Lake Perris Drive (Drive-thru)

Riverside @ 5261 Arlington Avenue (Drive-thru)

Appointment required.
Call 800.945.6171.



Beaumont @ 306 E. 6th Street (New location due to Apple Fire)

Desert Hot Springs @ 12-800 W. Arroyo Drive

Jurupa Valley @ 5293 Mission Blvd.

Coachella @ 51-251 Douma Street

Norco @ 3737 Crestview Drive

Perris @ 18150 Wood Road (Markham St. entrance)

Temecula @ 41000 County Center Drive

Moreno Valley @ 13671 Frederick Street

Walk-ins OK!
Register as a patient:
<https://lhi.care/covidtesting>

Bring patient ID # and photo ID
to your appointment.
No Internet? Call 888.634.1123



*All locations are indoor, unless otherwise noted.
For more info: www.rivcoph.org/coronavirus/testing

standard the Governor has set for opening more businesses and permitting more activities, so it is crucial that people participate in wide-spread community testing, so that we can meet those benchmarks.

Q. In the state’s Blueprint for a Safer Economy, why are counties being penalized if testing numbers are less than the average number of tests being administered throughout the state?

A. The state is concerned that some counties might attempt to “game the system” by testing as few people as possible. Because if you aren’t doing any testing, you won’t identify as many new cases, and that will keep your new case rate artificially low. To avoid that, they have established a formula that punishes counties that are testing below the state average, and give a bonus to counties that are testing above the state average, because the increased testing is seen as identifying cases sooner, and preventing the spread, but will also result in new case numbers that might put a county outside the acceptable range for opening businesses and activities.

MORE Q&A ON NEXT PAGE

MORE COVID TESTING Q&A

Q. What should Riverside County's daily test numbers be to meet the state average?

A. According to our Public Health Department, last week California was currently testing on average 216 people per 100,000 population per day. So, if you are testing above that number, your case rate will be adjusted downward (lowered) as described in the table. If you are testing below the state median, your case rate is adjusted upward (raised). Riverside County was testing at 131 people per 100,000 population per day, resulting in a significant penalty in our case rate. Three weeks ago, that penalty moved us from 7.4 cases per 100,000 residents, to an adjusted number of 8.6 per 100,000, which kept us above the level we needed to move into the Red Tier that week. Fortunately, our numbers subsequently declined further, and two weeks ago we had an actual case rate of 5.8, which was adjusted to 6.7, qualifying us for that Red Tier, which requires an adjusted rate below 7.0, as well as a testing positivity rate below 8.0. To get to the next tier of opening businesses and activities, we need a case rate below 4.0 and a testing positivity rate below 5.0.

With the Sept. 29 update of state metrics, we are testing at 162.4/100k, and have a case rate of 6.0, with an adjusted case rate of 6.6 (our "adjustment penalty" went down due to increased testing). Our positivity rate is 4.7%, which is sufficient for the orange tier, but the case rate still needs to drop below 4.0 as well before we can move forward.

Q. What can people do to help Riverside County move to the next tier?

A. Be responsible! Wear masks whenever you are in enclosed spaces with people outside of your household, or outdoors if you can't maintain adequate distancing. Avoid crowds. Avoid indoor activities and gatherings with those outside your household whenever possible. Stay home (and get tested!) if you are sick. Cooperate with contact tracers if they call you. And if you find the opportunity to take a COVID test (the state and county COVID tests are all free), please do so!

Those wanting to see how we are doing at meeting the state metrics can look at this [WEBSITE](#) – it's updated every Tuesday. Currently Riverside County is a bit below the state average, but in Southern California, we are doing better than Los Angeles, San Bernardino, Imperial, and Ventura Counties, but not as well as San Diego and Orange Counties, at least as far as meeting the criteria for opening.



ILLEGAL GROW: Firefighters on Sept. 21 responded to an electrical fire in 10000 block of Icefield Court in Horsethief Canyon Ranch. The fire was caused by illegal wiring to facilitate a cannabis indoor grow. There were over 600 marijuana plants found in the uninhabited home. If you have information, contact Sgt. Warrington at 951-245-3300, you can remain anonymous.

Calls for sheriff service down; crimes and arrests as well

Lt. Aaron Kent, with the **Lake Elsinore Sheriff's Station**, provided information on Part I crimes that occurred here during **July** and **August**. September's statistics should be ready by the end of this week.

The station received **411 calls** for service from Temescal Valley during August – **60 fewer** than received in July.

Thirty-one calls in July were for Part I crimes: **21** in August. There were no homicides reported for the two-month period. Here's the breakdown:

Assaults – 2 in August and 6 in July.
Burglaries – 4 and 2.
Grand/Petty Theft – 10 and 13.
Rape/Sex Crime – 1 and 2.
Robbery – 0 and 1.
Vehicle Theft – 3 and 3.
Theft from Vehicle – 1 and 4.



There were **11 arrests in July** – five felonies, including an outstanding warrant, possession of methamphetamines for sale and physical injury to a spouse. There were six misdemeanor arrests – two for outstanding warrants, one battery against a spouse or cohabitant and three for driving under the influence.

August saw five arrests – one felony for an outstanding warrant, and four misdemeanors – an outstanding warrant, two for possession of drug paraphernalia and one for being under the influence of a controlled substance.

There were **10 vandalism**s reported for July and **three** for August. **Disturbing the peace** calls numbered **31** and **33**.

BEDFORD BUST: Pictured at right, the Lake Elsinore Sheriff's Station Problem Oriented Policing Team on Sept. 22 responded to the 8600 block of Bedford Motorway in Temescal Valley and located a stolen vehicle parked in front of the residence. The deputies, while speaking to homeowner Richard Scott Roberts, 57, could see in plain view a large amount of methamphetamine. A search warrant was authored. Deputies located about 400 grams of meth (almost a pound), 3 grams of heroin, one stolen firearm, one stolen vehicle, large amount of U.S. currency and other indicia of narcotic sales. Roberts was taken into custody and booked for sales of narcotics and possession of stolen property. Anyone with additional information is encouraged to contact Deputy Yu at the Lake Elsinore Sheriff's Station 951-245-3300.

Glen Ivy Hot Springs is open with a new spa experience

'Passport to Wellness' spa day package includes open air massages, private lounges, dedicated concierges and more

EDITOR'S NOTE: *There's nothing better we like to do than promote our Temescal Valley businesses – and Glen Ivy Hot Springs is without a doubt the oldest at 160 years and easily the most renowned, with a worldwide reputation of excellence in the spa and wellness industry. We're excited to share this news release with Glen Ivy's Temescal Valley neighbors.*

Glen Ivy Hot Springs was pleased to reopen in August with one ultimate spa package, Passport to Wellness, a new outdoor spa experience following all CDPH and CDC physical distance and safety guidelines. In the new format, guests are invited to enjoy a curated day of profound relaxation including open-air massage, facial or nail care treatments, fitness classes, swimming and fresh dining while exploring the lush and peaceful grounds.

Passport to Wellness offers visitors a personalized Glen Ivy Hot Springs experience like never before. All spa goers enjoy private lounges with pool chaises, a dining area, umbrellas, a private changing cabana and a dedicated host. A personal concierge, Glen Ivy spa hosts will create the ultimate day of poolside relaxation for guests.

For lunch, guests can indulge in a chef-driven three-course meal with a premium wine pairing. The new lunch menu features wholesome California cuisine with a focus on healthy salads and fresh seafood.

For now, the Secret Garden has been transformed into an oasis for open-air massages set to the calming sounds of chirping birds, rustling leaves and waterfalls in the distance. Here, guests can decompress with a 50-minute full-body Swedish-style massage. Fitness classes are still a part of every day at Glen Ivy and visitors will still enjoy complimentary yoga, meditation, Aqua Fit and Aqua Yoga classes.

Currently, a Passport to Wellness package is required to visit Glen Ivy Hot Springs. Package pricing varies based on private lounge location and start at \$295 per person. Reservations are required.



ULTIMATE LUXURY: The spa's Secret Garden now serves as the background for open-air massages. The 50-minute Swedish-style massage is accompanied by the sound of chirping birds, rustling leaves and waterfalls.

Glen Ivy Hot Springs remains committed to health and safety and is following guidance put forth by local and state health authorities, OSHA, CDPH and the CDC to offer a safe wellness experience for all. Several new protocols have been introduced to keep both employees and guests safe while at the resort, including operating entirely outdoors, limiting capacity, exposure screenings, temperature checks, face coverings, and physical distancing, among additional safety measures. For current information on Glen Ivy Hot Springs' policies, please visit <https://www.glenivy.com/covid-19/>

CNUSD receives \$1.1 million from Insurance for embezzled funds

The Corona-Norco Unified School District announced in late August it received **\$1.1 million** from its insurance company to cover some of the more than \$2 million prosecutors say former Assistant Superintendent **Ted Rozzi** embezzled from the district.

A state audit estimated **\$2.6 million** was taken from 2002 to 2017 by Rozzi, who was the facilities director until his resignation in 2017.

Rozzi, in November of 2019, was charged with 30 felony counts of allegedly embezzling public funds from the district. **Edward Mierau**, chief executive officer and chief financial officer of **Neff Construction**, was charged with 27 felony counts for allegedly assisting Rozzi.

The two are accused of a scheme that diverted school construction funds paid by Neff into personal banking and credit card accounts held by Rozzi.

The independent audit of the district was by the state's **Fiscal Crisis & Management Assistance Team** and ordered by **County Superintendent of Schools Judy White**. The audit has exhibits illustrating evidence of fraud and the misappropriation of funds.

Rozzi's next court appearance is scheduled **Friday, Oct. 16**.



PAMPERED: Spa goers enjoy private lounges with pool chaises, a dining area, umbrellas, a private changing cabana and a dedicated host.

Cannabis shop likely on Supervisors' Oct. 20 agenda

Business could be in operation by next summer if approved

It's likely the approval of an application for a **Conditional Use Permit** to allow a cannabis business in Temescal Valley will be on the **Board of Supervisors** agenda for the **Tuesday, Oct. 20** meeting. If approved the business would operate at **23215 Temescal Canyon Road**.

River Releaf is the applicant seeking the permit for a "microbusiness" allowing not only retail sales but also indoor cultivation, manufacturing and the distribution of cannabis.

The proposed location, an 8,565-square-foot, two-story building, is in a small business park where Dawson Canyon road dead-ends into Temescal Canyon Road. Planned building usage would devote 1,500 square feet to retail, 4,500 square feet for cultivation, 1,580 square feet for distribution and 985 square feet for manufacturing. There also would be areas for storage, office, employee breakroom, lobby/reception and restrooms.

The microbusiness would employ 20 to 25 people and operate 24 hours a day, seven days a week. Business hours for retail sales would be from 8 a.m. to 10 p.m., and the cultivation, distribution and manufacturing components from 10 p.m. to 8 a.m.



Included in the employee count would be three, 24/7, armed security guards, according to River Releaf representative

Devon Julian who met with the **We Are Temescal Valley Development Committee** via Zoom in late August. He said security would be "bank level," including video monitoring which can be accessed by law enforcement, limited access areas controlled by keycards, no product accessible to customers at any time, and burglar alarms in specific areas of the facility while not in use.

Concern by Development Committee members still remains over the parking situation. The building has 17 parking spaces for both employees and customers. Julian said a parking attendant would be onsite during retail business hours to help guide customers to the proper parking stalls, ensure no loitering or onsite consumption exists and help traffic flow more smoothly, and that the county **Planning Commission** review of the project in June required only 14 parking spaces.

Also on the agenda for the Oct. 20 board meeting would be the approval of a **Development Agreement** requiring River Releaf to pay the county **\$52,930** annually with a 2 percent rate increase each year. Also paid to the county annually would be a **Commercial Cannabis Activity Public Benefit** of **\$66,162** with an annual increase of 5 percent. The Public Benefit funds can only be used in Temescal Valley.

Additionally, Julian said River Releaf plans to find local community groups and causes to which it can contribute money and volunteer time once operations begin. If approved, the retail business could possibly open in six to eight months after receiving a state cannabis license.

According to Julian, River Releaf is owned by individuals with extensive cannabis experience. **Chris Francy**, the primary principal, has operated licensed cannabis facilities in California



CULTURE CANNABIS CLUB: A River Releaf-owned business similar to the one pictured is proposed for 23215 Temescal Canyon Road in the former location of the Top Notch Plumbing, Heating & Air Conditioning business.

since 2015 and in that time has built and operated multiple cultivation and retail operations. Julian said Francy is an expert in retail licensing and operations with ownership in businesses located in Santa Ana, Moreno Valley, San Bernardino, Long Beach, Seaside and Desert Hot Springs. If approved, the Temescal Valley business would be known as **Culture Cannabis Club**.

Because the Oct. 20 meeting is a **public hearing**, citizens wishing to comment on the business can do so at the meeting (with masks and social distancing), or by email, prior to the hearing date, to county planner **Russell Brady** – rbrady@rivco.org and to **Supervisor Kevin Jeffries**' 1st District staff -- district1@rivco.org

TCR detour road to open soon; drive carefully, heed warnings

The **Rancon Group** continues to work on the widening of Temescal Canyon Road south of Hostettler Road to facilitate construction of its 7-acre **Ranch RV & Self-Storage** facility.

The road widening calls for construction of a temporary detour road that is now paved and TCR should be closed soon. Construction and detour signs will be posted. There's much work to be done on Temescal Canyon Road and the detour could be in place for up to one year.

If you have any questions, contact Rancon's **Dan Long** at **951-200-2367** or dlong@rancongroup.com



COULD YOUR COLLEGE FRESHMAN USE A \$1,500 SCHOLARSHIP?

Waste Management El Sobrante Landfill 2020 Scholarship Program



Are you interested in learning more about the fast-growing field of sustainability? If so, apply for the Waste Management El Sobrante Landfill Scholarship Program.



Scholarship Eligibility Criteria:

- College Freshman
- Temescal Valley Resident
- Graduated HS with GPA of 2.5 or higher
- Pursuing a major in Environmental Science, Engineering, Urban Planning, Biology, or undecided.



Scholarships will be in the amounts of \$1,500 per winner and a total of \$6,000 will be awarded overall.

Applications are due October 26, 2020.
Two letters of reference and a 500-word essay are required with each application.
Please contact Art Marquez for an application.



If you have any questions, please contact Waste Management Community Relations Representative Art Marquez at (951) 277-5112 or Amarquez6@wm.com.

THINK GREEN®

TIMELINE FOR CNUSD SUPERINTENDENT SEARCH



OFFICIAL TIMELINE

(Flexible based on Board direction)

Corona-Norco Unified School District Superintendent Search

Note: *Blue italicized text* indicates Board Participation

PRELIMINARY AUG 2020	August 18	District receives and discusses search option
	August 25	<i>Board approves contract with Leadership Associates</i>
	September 3	<i>Board confers with consultants and determines characteristics, skills & qualities desired in a new superintendent; Board publicly announces timeline and procedures for superintendent selection</i>
TIER 1 SEPT 2020 Phases 1-4	September 10-18	Consultants confer with staff and community designated by Board to receive input Sept 15-18; Online survey is posted to district website September 10-18
	September	<i>Consultants prepare report and present findings to Board; next steps in search process are determined</i>
	Late September	<i>Board may consider selected interview(s)</i>
	Early October	Development of Position Description; Advertising and active recruitment; Ad appears in <u>EdCal</u> , (Two consecutive publications Oct 7 & 14);
TIER 2 OCTOBER 2020 Phase 5	Early October	Recruitment of Candidates
	October 22	Deadline for applications
	October	Consultants complete comprehensive reference and background checks on applicants
	October	<i>Board confers with consultants, reviews all applications and selects candidates to be interviewed</i>
TIER 3 OCT/NOV 2020 Phases 6-8	Late October / Early November	<i>Board interviews candidates; selects finalist</i>
	November	<i>Board completes the validation process with leading candidate's community and makes final determination</i>
	November	<i>Board approves superintendent contract at a regularly scheduled board meeting</i>
JANUARY 2021 Phase 9	January 1 (or as mutually agreed)	New superintendent begins

STUDENTS RIDE THE BUS FOR FREE!

(Temescal Valley has a CommuterLink stop at Tom's Farms)



LEARN MORE [HERE](#)

TRAVEL WITH CONFIDENCE

On every trip you take with RTA, your safety and well-being is our number-one priority. We're committed to giving you peace of mind when you travel with us. Here's what RTA is doing to make your journey with us safe.

FACE COVERINGS

Face coverings that cover the mouth and nose are required for all customers and coach operators. Be sure your face covering is on before you board and wear it during your entire trip. If you decline to wear one, you will not be able to ride.



FREQUENT CLEANING

For your peace of mind, RTA is cleaning and sanitizing buses with electrostatic foggers every day. We've also upgraded our on-board ventilation system and filters to give you fresher, cleaner air while you ride.



MAXIMUM CAPACITY

RTA is practicing social distancing by limiting the number of customers on all our buses so there is plenty of room to spread out.



SAFETY BARRIERS

To maintain a healthy environment while boarding, RTA is installing safety barriers on all buses to minimize contact between the drivers and customers. In the meantime, customers on buses without the barriers will be asked to board and exit from the rear doors to maximize safety.



GO TOUCH-FREE

You can now scan your mobile pass to limit physical interactions. Download the free Token Transit app for contactless payment.



STAY CONNECTED

Plan your next trip by visiting RiversideTransit.com or calling our Customer Information Center at (951) 565-5002. Real-time bus arrival information is available on the BusWatch and Transit apps. You can also get instant route and schedule updates by signing up for iAlerts, BusWatch or visit us on social media to stay in the loop.



KEEPING EVERYONE SAFE

In an effort to maintain a safe environment onboard the bus, all RTA employees are required to pass a health check before starting work every day. At our facilities, we are doing around-the-clock disinfecting.



DON'T TRAVEL IF YOU'RE SICK

Staying home is the best way to protect yourself and others from getting sick.



(951) 565-5002 | RiversideTransit.com

Community Action Partnership

PATHWAYS TO EMPLOYMENT

Was your organization affected by the COVID-19 pandemic, and need help?



Community Action Pathways to Employment

If you are a Riverside County non-profit or government entity who has been affected by the COVID-19 pandemic and would like assistance, contact us!

Assist non-profits and government entities on the front lines of the COVID-19 response through additional workforce support.

Provide on the job training for adults 18+ to engage in local projects and support organizations directly affected by the COVID-19 pandemic.

To Apply Scan the code
or visit the link below:
<https://tinyurl.com/yxtexhf5>



For general questions visit: www.capriverside.org
Call: 951-955-0185
or E-mail: workforcehelp@rivco.org



HERE'S WHAT OPENED WHEN COUNTY MOVED TO RED TIER



Effective immediately. The following businesses **MAY RESUME INDOOR OPERATIONS WITH MODIFICATIONS AND LOWER CAPACITY:**

GYMS, RESTAURANTS & TATTOO PARLORS



NAIL SALONS, MOVIE THEATERS, BODY WAXING & PLACES OF WORSHIP



YOUTH COMMUNITY CORPS

Are you 16-24 years old and interested in a paid internship???

LEARN MORE!



Help your community in the fight against COVID-19!

Make A Difference!

The Riverside County Youth Community Corps project will:

- Provide paid internship at a local nonprofit organization or municipality.
- Provide the opportunity to contribute to a community response to COVID-19 by assisting in supplying vital resources and services during the pandemic.
- Help you earn community service volunteer hours.

6 week or 12 week Internships

Must reside in Riverside County

Must be 16-24 years old

Apply today at: <https://forms.gle/VgEXUM4N2gEKyA3t7>

Or Visit: www.rivcoworkforce.com

For questions please contact us at: youthcorps@rivco.org

Gain work experience and earn



This program is an equal opportunity employer/program.

RivCo Responds

#RivCoNOW



RESIDENTS

*Numbers as of 8/31/20

Mask Giveaway



10 million

Includes 4 million to nonprofits and places of worship

Mobile Lab



\$1.8 million

Rental Relief



\$33 million

Project Roomkey
Emergency hotel rooms to combat homelessness



831 people helped
107 transitioned to permanent housing

Homeless Shelters



3,000 face masks
600 face shields

Great Plates Program



730,653 meals delivered to seniors

Food Access Coordination



662 food banks, pantries, shelter and school lunch sites

Food Banks, Pantries & Food Shelter Support



\$4.1 million

Youth Community Corps



\$2 million

Pathways to Employment Training Program



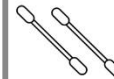
\$4 million

Student Laptops



\$11 million

Tests



506,000 tests performed

CRITICAL WORKERS

PPE to Healthcare Workers and First Responders



3.5 million

Quarantine Support for Farmworkers



\$1 million

Skilled Nursing Facility Outreach Teams



1,016 visits to group living facilities

Childcare for Essential Workers



\$5 million

Hospital Coordination



17 acute care hospitals

Contact Tracers



361 newly hired disease investigators

BUSINESS & NONPROFIT SUPPORT

Small Business Grants



\$46.5 million

Nonprofit Grants



\$5 million

Masks for Businesses



2 million

Business Ambassador Program



12 ambassadors

Flu Vaccines Available at Riverside University Health System Community Health Centers



Flu Vaccine Appointments Encouraged



Walk-in hours

8:00 am - 11:00 am

1:00 pm - 4:00 pm



For More Information Call:

1-800-720-9553

www.rivco-familycarecenters.org



The Influenza vaccine is provided by the California Department of Public Health and Riverside University Health System -Public Health.

<p>Banning Family Care Center 3055 W. Ramsey St. Banning, CA 92220</p>	<p>Corona Community Health Center 2813 S. Main Street Corona , CA 92282</p>	<p>Hemet Family Care Center 880 N. State St. Hemet, CA 92543</p>
<p>Indio Family Care Center 47-923 Oasis St. Indio, CA 92201</p>	<p>Jurupa Valley Community Health Center 8876 Mission Blvd. Jurupa Valley, CA 92509</p>	<p>Lake Elsinore Family Care Center 2499 E. Lakeshore Dr. Lake Elsinore, CA 92530</p>
<p>Moreno Valley Community Health Center 23520 Cactus Ave. Moreno Valley, CA 92553</p>	<p>Palm Springs Family Care Center 1515 North Sunrise Way Palm Springs, CA 92262</p>	<p>Perris Family Care Center (Dr. Bruce Robert Reid Health Center) 308 E. San Jacinto Ave. Perris, CA 92570</p>
<p>Perris Valley Community Health Center 450 E. San Jacinto Ave. Perris, CA 92571</p>	<p>Riverside Neighborhood Health Center 7140 Indiana Ave. Riverside, CA 92504</p>	<p>Rubidoux Family Care Center (Don Schroeder Family Care Center) 5256 Mission Blvd. Riverside, CA 92509</p>

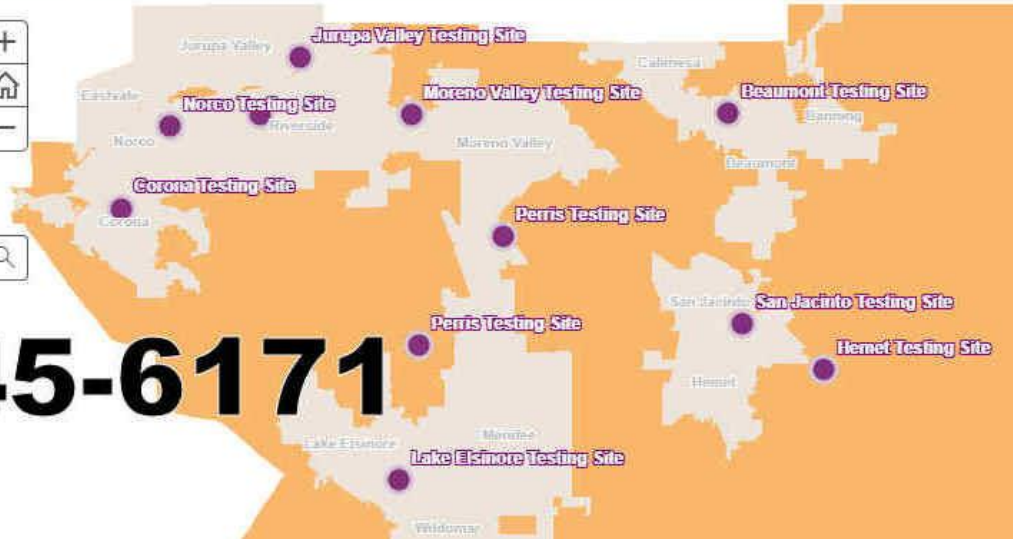
COVID-19 Testing Locations

Testing Locations

What You Need to Know

FAQs

Make an appointment. Click on a location on the map for more information.



800-945-6171



Novel Coronavirus COVID-19 Testing

Cathedral City @ 33520 Date Palm Drive

Corona @ 921 S. Belle Avenue

Indio @ 46350 Arabia Street (Drive-thru)

Lake Elsinore @ 500 Diamond Drive (*Make appointment online: www.projectbaseline.com/study/covid-19 or call 800.945.6171)--Drive-thru

Moreno Valley @ 21401 Box Springs Road

Perris @ 18700 Lake Perris Drive (Drive-thru)

Riverside @ 6115 Arlington Avenue
(Closing: May 30; Drive thru)

Riverside @ 5261 Arlington Avenue
(Opening June 2; Drive-thru)

San Jacinto @ 790 S. State Street

Beaumont @ 390 Oak Valley Parkway

Desert Hot Springs @ 12-800 W. Arroyo Drive

Hemet @ 43935 Acacia Avenue

Jurupa Valley @ 5293 Mission Blvd.

Mecca @ 91391 66th Avenue

Norco @ 3737 Crestview Drive

Perris @ 21565 Steele Peak Drive

Temecula @ 41000 County Center Drive

Appointment required.
Call **800.945.6171.**



Appointment required. Call
888.634.1123 or visit
<https://lhi.care/covidtesting>.



Coping With Stress During Infectious Disease Outbreaks

Riverside University Health System – Behavioral Health supports the behavioral health and wellbeing of Riverside County. We realize that news of the outbreak of an infectious disease can raise concerns and increase the stress of everyday life – even though the location of the outbreak may be far away, and you fully understand that there is a very low risk of getting sick. These are very normal reactions and these concerns can become larger if you have family and friends in parts of the world experiencing the outbreak or if you know of people who are doing extensive travel.

It is important to remember that you need to care for your own physical and mental health at times like this – and that support and resources are available if you feel a need for help or talk to someone.



WHAT YOU CAN DO TO HELP COPE WITH EMOTIONAL DISTRESS

1. Manage Your Stress

- Stay informed. Refer to credible sources for updates on the local situation.
- Stay focused on your personal strengths.
- Maintain a routine.
- Make time to relax and rest.

2. Be Informed and Inform Your Family

- Become familiar with local medical and mental health resources in your community. Attend community meetings for resources/education.
- Avoid sharing unconfirmed news about the infectious disease to avoid creating unnecessary fear and panic.
- Give honest age-appropriate information to children and remember to stay calm; children often feel what you feel.

3. Connect with Your Community

- Keep contact with family and friends.
- Join community and/or faith groups.
- Accept help from family, friends, co-workers and clergy.
- Reach out to neighbors and friends with special needs who may need your help.

4. Reach Out and Help

- If you know someone affected by the outbreak, call them to see how they are doing, and remember to keep their confidentiality.
- Consider an act of kindness for those who have been asked to practice social distancing, such as having a meal delivered or offering to drop off homework at their doorstep.
- Locate and volunteer at a charity or organization near you.
- Encourage friends and family to get involved with you.

5. Be Sensitive

- Avoid blaming anyone or assuming someone has the disease because of the way they look or where they or their families come from.
- An infectious disease is not connected to any racial or ethnic group; speak up in kindness when you hear false rumors or negative stereotypes that foster racism and xenophobia.

Consider seeking professional help if you or a loved one are having difficulty coping.

Be Proactive!

1. Stay informed with information from credible sources.
2. Stay connected with friends, family, and community groups.
3. Help others in need by volunteering and donating time and resources to trusted organizations.
4. Keep a positive attitude

Resources

- [Call 2-1-1](#) referrals for health and social services
- Behavioral Health CARES Line (800) 706-7500
- Substance Use CARES Line (800) 499-3008
- [24/7 Mental Health Urgent Care](#)
 - Riverside (951) 509-2499
 - Palm Springs (442) 268-7000
 - Perris (951) 349-4195

Riverside University Health System - Public Health

www.rivcoph.org/

or call 2-1-1 for more information

COVID-19 Resources

RIVERSIDE COUNTY CORONAVIRUS WEB PAGE

This page has all the latest information – data, numbers, statistics, resources, news releases, videos and more, and is updated daily:

<https://www.rivcoph.org/coronavirus>

RIVERSIDE COUNTY PUBLIC HEALTH DEPARTMENT FACEBOOK PAGE

**County of Riverside
Coronavirus Information Line
Dial: 2-1-1**
General information -- no medical advice

ARE YOU A BUSINESSOWNER?

<https://rivcoccsd.org/covidbizhelp>

ARE YOU UNEMPLOYED?

<https://www.rivcoworkforce.com/COVID-19Resources.aspx>

ARE YOU A STRESSED?

<https://www.rcdmh.org/Coronavirus>