



Join us on Facebook. Sign up to receive this newsletter by email at WeAreTV.org@gmail.com

WE ARE TEMESCAL VALLEY

Vol. 6 No. 2

WeAreTV.org

November 2020

Toscana Village commercial center is moving forward

SITE PLAN



ARCO, am/pm, Jack in the Box, Popeyes planned for corner of Indian Truck Trail and TCR

The **Toscana Village at Temescal Valley** commercial center, approved by the county Board of Supervisors almost two years ago but faced with legal delays and parcel changes, appears to be moving forward.

The 27-acre location is at the northwest corner of Indian Truck Trail and Temescal Canyon Road. Proposed to be constructed in two phases, possible tenants announced early in the planning process for the 12-acre first phase were a 16-pump **ARCO** station with car wash, an **am/pm** mini-mart, and a **Jack in the Box**.

A five-page marketing prospectus created by **Jay Brun**, a senior vice president with **Advisors Real Estate Asset Services**, shows the addition of a **Popeyes Louisiana Kitchen** and **The Learning Experience**, a daycare and education center for preschool through kindergarten ages. An unnamed tire store also is listed.

Proposed but not confirmed for the 15-acre second phase are additional restaurants, office and retail space, a supermarket, and possibly a bank and pharmacy.

According to **Tom Chavez**, vice president of **Speedway Development**, "Subject to COVID economy impacts to pending and future tenants, we hope to begin earthwork first quarter 2021." It's unknown when construction could begin.

View the marketing prospectus
[HERE](#)



MARKETING THE PROPERTY: This recently placed sign at the northbound on-ramp to the I-15 advertises the availability of pads in the Toscana Village at Temescal Valley commercial center.



Calls for service, Part 1 crimes, arrests increase in October

Lt. Aaron Kent, with the Lake Elsinore Sheriff's Station, provided information on Part I crimes that occurred here during September and October.

The station received **425 calls** for service from Temescal Valley during October – **six more** than received in September.

Twenty-eight calls in September were for Part I crimes and there were **42** calls in October. No homicides or rape/sex crimes were reported for the two-month period. Here's the breakdown:

Assault – 0 in September and **5** in October.

Burglary – 2 and **0**.

Grand/Petty Theft – 17 and **18**.

Robbery – 2 and **1**.

Vehicle Theft – 4 and **9**.

Theft from Vehicle – 3 and **9**.



There were **eight arrests in September** – three felonies, including possession for sale of a controlled substance, the sale or transport of methamphetamine, and a robbery. There were five misdemeanor arrests – three for possession of drug paraphernalia, one for being under the influence of a controlled substance and one for public intoxication.

October saw nine arrests – five felonies including three for domestic violence, one for petty theft with a prior, and one for an outstanding warrant. There were four misdemeanors – three for outstanding warrants and one for driving on a suspended license. There were **eight vandalism**s reported for September and **five** for October. **Disturbing the peace** calls numbered **28** and **30**.

Lt. Kent, in response to the increases in vehicle theft and theft from vehicles, reminds residents:

- Whenever possible, park your vehicle in a secure garage and lock it.
- Always lock your vehicle with the windows closed. Never leave valuables inside the car, especially not in clear view, including cash, gift cards, sunglasses, spare keys, small electronics and phone chargers, purses or wallets, checkbooks, garage door openers, personal paperwork, vehicle ownership title, credit cards, ATM cards or any personal identification.
- Bring electronics and personal items into your home or office whenever possible.
- Use anti-theft or automatic tracking devices. If your vehicle wasn't equipped with an alarm or hidden tracking device when purchased, have one installed.
- Never leave your keys in your vehicle, even at a gas station, a locked garage, or in hide-a-key boxes.
- Park your vehicle in a well-lit area at night.
- Never hide a spare ignition key in your vehicle, including under floor mats, sun visor, etc.



SOUND OFF!

This month introducing a new feature to the newsletter. Got a gripe? Need an answer? Have an opinion? Sound off here. Send your submittal to WeAreTV.org@gmail.com

This Month:

Let's keep Temescal Valley clean

By TRACY DAVIS

Wildrose Ranch resident

Services from Riverside County have seemed a little lax this year but I don't think it's all COVID-related. Illegal dumping has been rampant along the roadsides and on private property that is easy to access.

Although the county picks up dumped items, not all roads are created equal. The freeway, private and HOA roads are not available for this county service. The removal of illegal dumping within HOA neighborhoods is the HOA's responsibility. The county can only pick up along county-maintained roads and easements -- not on private roads or private property.

Riverside County Waste Resources Department has an easy online form to report illegal dumping --

<http://www.rcwaste.org/illegal> or by using the RivCo mobile app on your smartphone. You can even attach a photo. It takes the department about three to seven days to respond.

Caltrans picks up on the freeway -- <https://csr.dot.ca.gov>. You must login to submit a request for litter cleanup.

Bob Hafner, the **We Are Temescal Valley Beautification Committee** chairman, organizes community cleanups to keep Temescal Valley picked up -- the first since the COVID outbreak was held this past Saturday. Bob also has reported our section of the I-15, between Weirick Road and Lake Street, to Caltrans a couple of times this year.

One of the big items found during our Temescal Valley cleanups is mattresses. I suspect dumped by people buying mattresses online and getting rid of the old one.

There is a huge recycling push in California for mattresses -- over 70 percent can be repurposed. Old mattresses and/or box springs are dismantled and the steel, foam, fabric and wood are separated. Those items can then be used to make new products. Did you know you pay a recycling fee on every new mattress? That fee funds the recycling program, established in 2015.

There are three ways to recycle your mattress. First, retailers take back the old one when they deliver the new mattress, by far the easiest. Second, bulky item pickup with your trash hauler -- **WMI** returns the mattress. Lastly, you can self-haul to one of the local drop offs, the closest are in Corona and Perris. Link to the **Bye Bye Mattress** program and the drop off locator -- <https://byebyemattress.com/programs-by-state/california/#ca-locator>

Come on, Temescal Valley! Let's all do our part in keeping our beautiful community clean.

EVMWD to create taxation district to fund infrastructure

Planned homes in Horsethief area create need for reclamation facility expansion

The **Elsinore Valley Municipal Water District (EVMWD)**, has scheduled a public hearing at 4 p.m., **Tuesday, Nov. 24** for the purpose of creating a **Community Facility District (CFD)**, to fund additional infrastructure needed for new development adjacent to the **Horsethief Canyon Ranch, Lemon Grove and Glen Eden** communities.

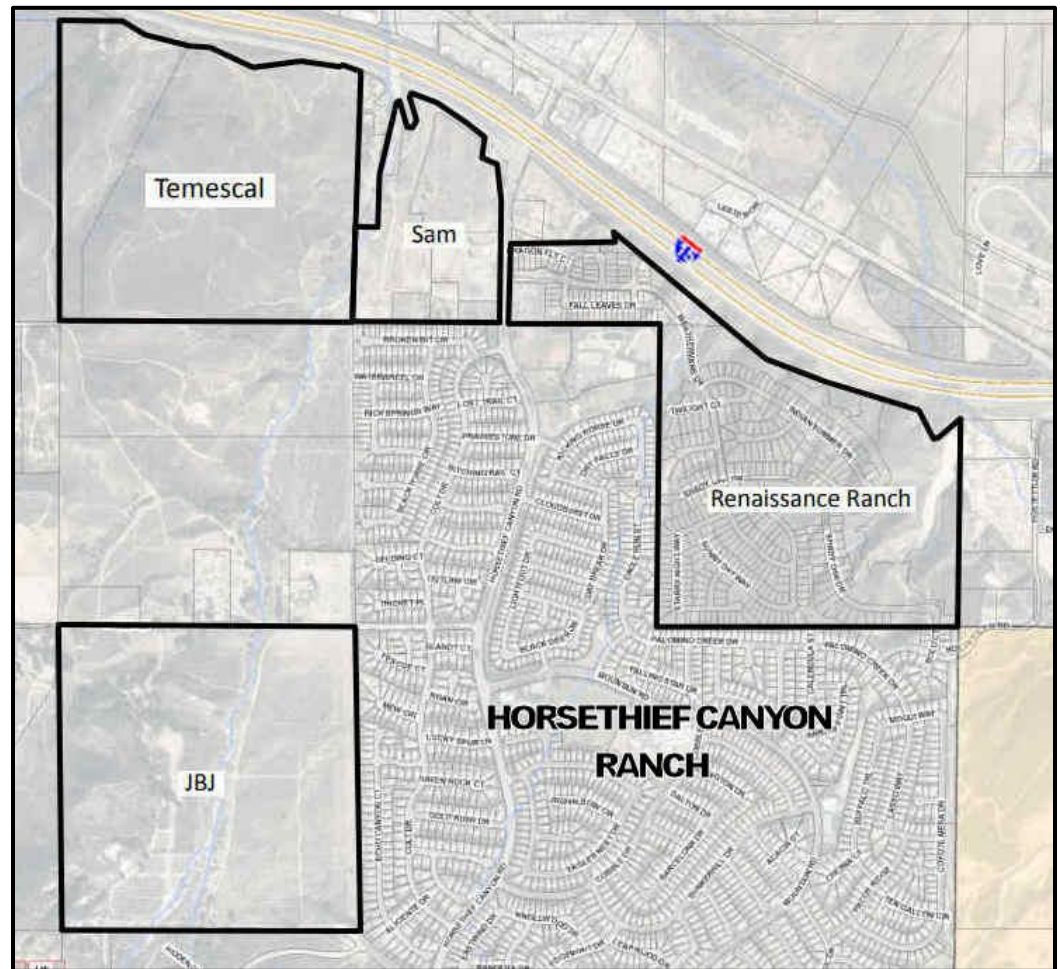
None of the current homes in the area will be included in the new CFD.

Funds raised through the proposed CFD will be used for the expansion of the **Horsethief Water Reclamation Facility**, necessary to support four residential development projects approved by the county years ago. Bonds will be sold to finance the facility's expansion and repaid through Mello-Roos taxes levied on the homeowners in the new housing developments.

"Temescal," 148 acres owned by **Diversified Pacific Development Group**, had a tract map for 285 homes approved by the county in 2004.

"Renaissance Ranch," 157 acres owned by **Richland Communities**, was approved in 2005 for 355 homes but the developer soon could be seeking an industrial use for the property.

"JBJ Ranch," owned by **Mission Pacific Land Co.**, was approved in 2006 for 311 homes.



CFD IMPROVEMENT AREAS: Of the four previously approved housing developments pictured here, only 229 homes in "Sam" are ready to move forward. "Temescal" was approved for 285 homes in 2004, "JBJ" was approved for 311 homes in 2006 but both plans need to be updated with the county. Renaissance, approved for 355 homes in 2005, will probably seek an industrial use for the property in the near future.

The 49-acre **Horsethief Village**, owned by **Pacific Coves Investments** and shown on the map as **"Sam,"** was approved more than a decade ago for 325 dwelling units but received Board of Supervisors' approval in September to drop the number to 229 homes.

The CFD, with a current calculated bond issuance of **\$48.2 million**, will be formed with seven improvement areas. Temescal, Sam and JBJ will each have Improvement Areas A and B, and Renaissance Ranch only will have Improvement Area A.

Of the \$48.2 million, \$40.3 million is currently anticipated to be used to finance facilities. The difference of \$7.8 million includes reserves of \$3 million, capitalized Interest for two years at \$3 million, and cost of issuance and underwriters discount of \$1.8 million.

According to the EVMWD staff report, "Improvement Area A bonds will be based on the amount anticipated to finance each developer's proportionate share of the reclamation facility expansion, estimated to be \$20 million. These bonds are anticipated to be issued in the first half of 2021."

The report continues, "Improvement Area B bonds will be utilized for additional public facilities of either EVMWD, the **Lake Elsinore Unified School District**, the **County of Riverside**, or the **County Flood Control District** and issued based on the timing of each development. The total estimated amount of the B series bonds is \$17 million for the three developments."

According to the report, the purpose of dividing the CFD into improvement areas is to "provide flexibility in the future and to mitigate risk." If some developments proceed at the same time and others don't, the slower developing parcels do not impact the credit or special taxes of the other developments.

The CFD's "not-to-exceed" amount of bonded indebtedness is set at **\$57.5 million**. The actual amount of bonds issued will be dependent on information at the time of issuance (such as interest rates), capped at the authorized amount, and will abide by EVMWD's rules of regulation.

RCTC plans new I-15 lane for Temescal Valley/Corona area

As the **Riverside County Transportation Commission** nears completion of the **15 Express Lanes**, Commissioners voted last month to improve a traffic hot-spot on southbound I-15 between Cajalco and Weirick roads.

Heavy congestion occurs during peak hours on southbound I-15 through south Corona and into Temescal Valley. Once the 15 Express Lanes opens, I-15 will narrow from five lanes to three lanes at Cajalco Road when traveling south.

A new project, known as the **15 Corridor Operations Project** (15 COP), will add a non-tolled lane on southbound I-15 from the Cajalco Road on-ramp to the Weirick Road off-ramp, a segment slightly less than one mile. The project will widen the existing I-15 median, shift vehicles to this new pavement, and convert the existing outside lane to a new travel lane. In addition, the 15 COP will widen the Bedford Canyon Wash Bridge.

According to an RCTC news release, "Funding for the project is made possible by effective management of the 15 Express Lanes Project, which has **\$25 million** of unspent budget that will be used to fund much of the new southbound lane. Federal funds will pay for the balance of the **\$38.3 million** project cost."

RCTC says it has adopted an aggressive schedule for engineering, environmental studies, project design, and construction. The new lane could open in late 2024.

The project is designed to offer interim traffic congestion relief on I-15 near Cajalco and Weirick roads before the opening of another project, the **15 Express Lanes Southern Extension** (15 ELPSE), in about 2028. Technical studies are under way now for the 15 ELPSE, which would add express lanes in both directions in the median of I-15 between Cajalco Road and Route 74/Central Avenue in Lake Elsinore.

To sign up for 15 COP project updates: rctc.org/15cop



GIVE THE GIFT OF LIFE: LifeStream Bloodmobile is scheduled from 10 a.m. to 3 p.m., Sunday, Dec. 6 at Tom's Farms. Blood supplies are critically low. With your donation, receive a free COVID antibody test.

Reserve a time [HERE](#)



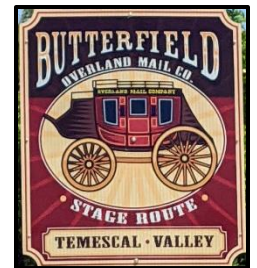
VIRTUALLY SPEAKING: Riverside County 1st Supervisor Kevin Jeffries was one of several speakers filmed for the Temescal Canyon Road Virtual Ribbon Cutting.

TCR widening project lauded with virtual ribbon cutting

It took over two years and **\$28 million** to complete but since earlier this year, motorists are enjoying the benefits of the **Temescal Canyon Road Widening Project**.

Two segments of the road were widened from two to four lanes – a 0.6 mile stretch between Leroy Road and Dos Lagos Drive, and 0.7 mile stretch north from Dawson Canyon Road.

Work included clearing the corridor, relocating power poles, installing a storm drain, removing the existing roadway, paving the fully widened street with curbs, and adding a center two-way left turn lane. Additionally, painted on-street bike lanes were added as well as sidewalk in developed areas. The historic aspect of the road is captured with colorful signs reminding motorists it was part of the original Butterfield Overland Mail route, plus a bas-relief of the stage is featured on a retaining wall at the north end of the project.



A ribbon-cutting to celebrate the completed work was scheduled in late June but a week prior to that, the county was placed on the state's "watch list" because of escalating COVID numbers. A decision was made to postpone the event.

In July, the county **Department of Transportation** did a successful virtual groundbreaking in Mecca and a decision was made to handle the TCR ribbon cutting in the same manner.

The event was filmed in segments at the end of October -- one speaker at a time. There was no large gathering of people, just the speaker and the film crew. After two weeks of editing, the virtual ribbon cutting debuted earlier this month on the Transportation Department's Facebook and Twitter pages.

For people not on social media, the county later posted it online for everyone to view. Not only does it celebrate the ribbon cutting but also is a strong marketing piece for Temescal Valley.

View it [HERE](#)

Detour road leaves some residents with safety concerns

Several residents in the **Horsethief Canyon Ranch** area have taken to social media to voice their concerns about the safety of a **temporary detour road** constructed adjacent to **Temescal Canyon Road** south of **Hostettler Road**.

The one-way southbound detour was necessitated as the **Rancon Group** begins construction of a 7.69-acre public storage and RV facility on the east side of Temescal Canyon road across from the **Temescal Canyon Rockery**.

Residents posted that the road needed to be straighter, especially where it now curves to rejoin TCR. Others noted no streetlights for nighttime driving and still others complained about the new stop signs at Hostettler Road. But a few people posted they thought motorists just needed to slow down in the construction area.

Since the county's approval of the project in December, Rancon's Director of Development **Dan Long** has endeavored to keep the community updated on the project and the construction of the detour road.

After learning of the residents concerns, Long said Rancon met with county Transportation on-site last week and went over several of improvements the company wants to make to the road including changing some striping, adding barricades and using rumble plates to slow down drivers. Long said he also spoke with the CHP and they are going to start regular patrols in the area and provide Rancon with feedback on additional safety precautions.

In the meantime, Long asks any residents with concerns to contact him at **951-200-2367** or dlong@rancongroup.com

Here is his latest update and response to the residents:

"We have been slowly posting signs in anticipation of the temporary road construction so drivers can be aware that road construction is coming soon. We did this so it was not a sudden surprise and so the community can be well-aware of construction activity within the roadway.

"It is a construction zone, speed limit is reduced for a reason. Speed limits must be respected to keep motorists and workers safe. Based on personal experience watching vehicles drive this section of the road, this is the main issue of concern. If speed limits are observed and obeyed, everyone will be much safer.

"It is a temporary condition. We are making a bad situation safer, but in the meantime, we need to have a temporary road in place to install the box culverts and utilities within the street.

"It is dark, it was dark before we started and it will remain dark until we get permanent lighting installed. We have added flashers to make it as safe as possible during nighttime.

"We installed the stop sign to slow traffic down. This may be inconvenient for some, but it slows traffic down and saves lives. We see people speeding way too fast along this road and it is proven that stop signs work.

"We are making adjustments to the paving on the south end to ease the transition so it is less curvy.

"Eventually the temporary road will be two-way. The safest solution is to slow down and obey speed limits. Once the construction road is two-way we will observe and adjust as



CONSTRUCTION ZONE: Residents have issues with the curve at the end of the detour road as it rejoins Temescal Canyon Road.

needed. We will also be adding more barricades to safely direct traffic and separate traffic from work areas and other obstacles.

"We are open to suggestions, but we have run many of our ideas up and down the flagpole with County Trans. Some ideas we had were not approved. We continue to coordinate with the county inspectors to make sure the road is as safe as possible. We ask the community to please slow down during construction."

Don't miss out. Order your pies now!
951-277-9463

Tom's Farms
Cheese and Wine Shoppe

Open Thanksgiving Day
Open 8am-1:30pm

Order Your Fresh Baked Holiday Pies
Pumpkin • Apple • Cherry • Boysenberry • Blueberry
Sweet Potatoe • Pineapple • Peach • Raspberry • Lemon

Special Order Pies
Coconut • Banana Cream • Chocolate
Dutch Apple • Dutch Cherry • Holiday Cheese Cake

Daily Fresh Baked Breads
French White • French Wheat • Pizza Bread
Sourdough Jalapeño Cheese Bread
Pound Cakes • "Teresa's Breads"

We Are Your Thanksgiving Choice
With 100's Of Craft Beers,
Wines And Champagnes
To Choose From

November 19, 2020

Media Contact:

Jose Arballo Jr.
RUHS-Public Health
951-712-3705
jarballojr@ruhealth.org

Health officials urge Riverside County residents to keep holiday gatherings ‘Smaller, Shorter, Safer’

Riverside County residents are asked to take precautions when celebrating Thanksgiving with ***smaller, shorter and safer*** get-togethers.

With the recent rise in coronavirus cases and COVID-19 hospitalizations, state health officials are urging residents to limit possible exposure to the virus by reducing the number of people they have contact with during Thanksgiving.

While some may opt to have family gatherings, residents are urged to follow these recommendations:

Smaller – If you are going to meet during the holiday, keep the groups small and separate, even within a household. Avoid large gatherings.

Shorter – Keep get-togethers to an hour or two.

Safer – Don’t forget about basic safety: wear a mask, practice social distancing and wash your hands. Eat and socialize outside. Consider seating one family group on the patio, while another sits in a separate area. Keep plenty of hand sanitizer on hand. Avoid sharing serving utensils.

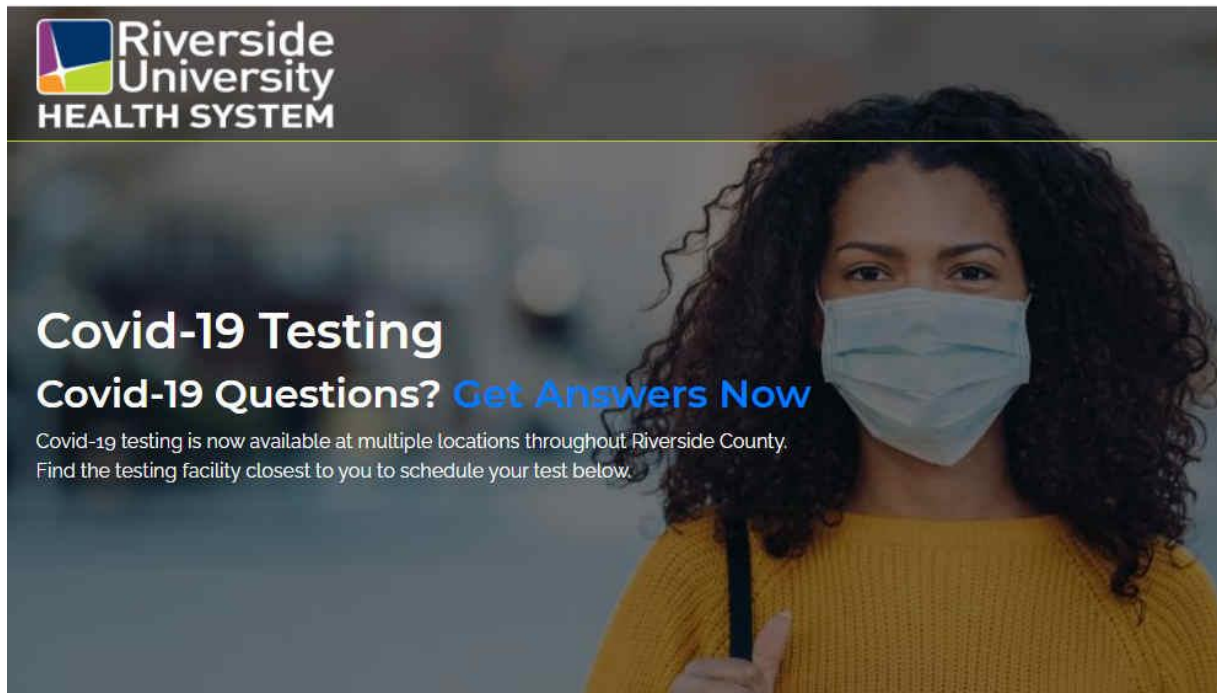
“We understand the desire to celebrate the holidays with loved ones, so consider these three steps that could help reduce the chance of virus spread if you decide to get together,” said Kim Saruwatari, director of the Riverside University Health System - Public Health. “Smaller, Shorter, Safer could really help slow the spread of the virus.”

Riverside County, like the rest of California, has seen a jump in cases, hospitalizations and the use of ICU beds over the last few weeks. The county was recently placed in the purple tier – the most restrictive of the four color-designated state tiers – as the case and positivity rates rose.

“Coronavirus is unfortunately rising rapidly in Riverside County, and around our state and nation,” said Riverside County Board Chair and Fourth District Supervisor V. Manuel Perez. “Let’s be careful and protect ourselves and our loved ones and follow these public health messages.”

WHERE TO GET TESTED FOR COVID

<https://gettested.ruhealth.org/>



Riverside University HEALTH SYSTEM

Covid-19 Testing

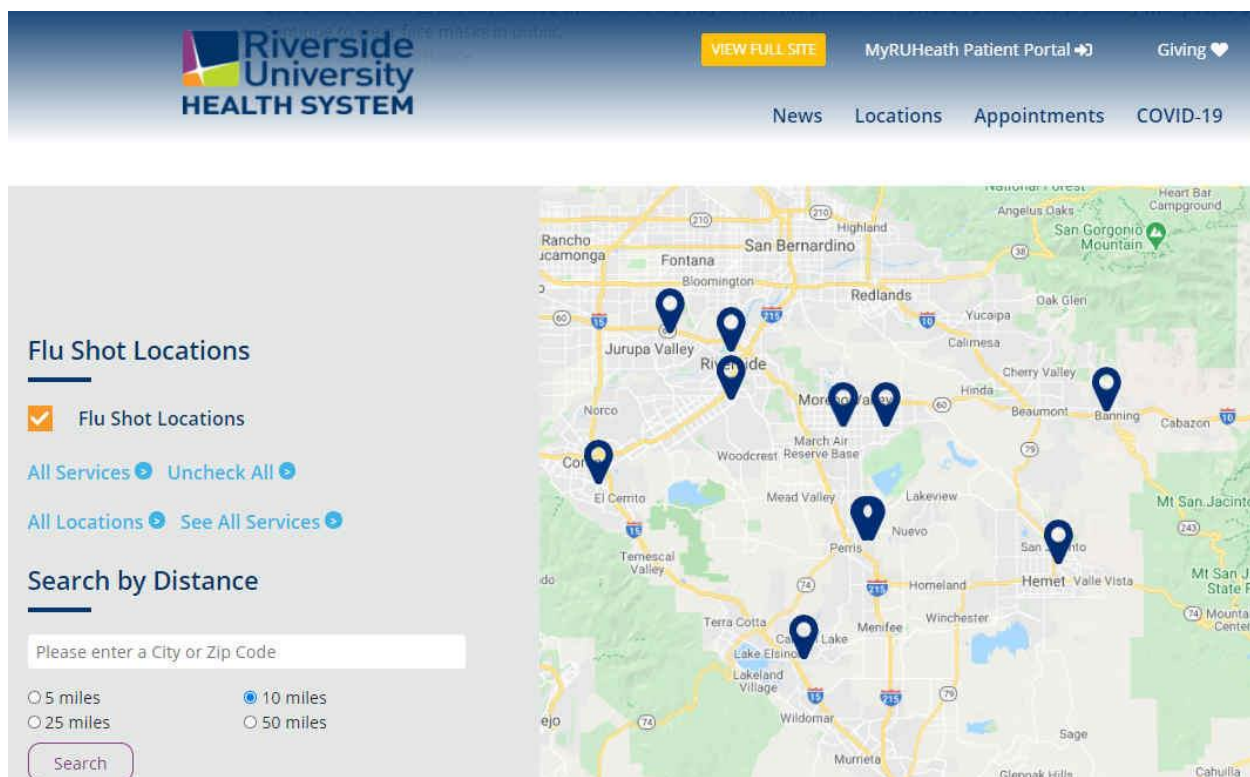
Covid-19 Questions? [Get Answers Now](#)

Covid-19 testing is now available at multiple locations throughout Riverside County. Find the testing facility closest to you to schedule your test below.

The banner features a woman with dark curly hair wearing a light blue surgical mask and a yellow sweater, pointing towards the camera. The background is a blurred outdoor setting.

FIND A FLU SHOT LOCATION

<https://www.ruhealth.org/flu>



Riverside University HEALTH SYSTEM

[VIEW FULL SITE](#) [MyRUHealth Patient Portal](#) [Giving](#)

[News](#) [Locations](#) [Appointments](#) [COVID-19](#)

Flu Shot Locations

☒ Flu Shot Locations

[All Services](#) [Uncheck All](#)

[All Locations](#) [See All Services](#)

Search by Distance

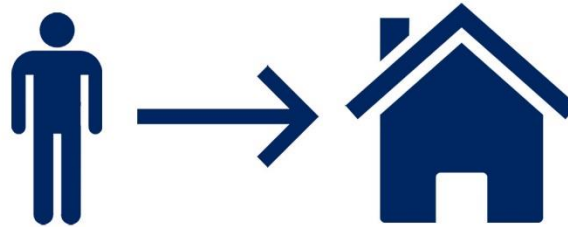
Please enter a City or Zip Code

☐ 5 miles ☒ 10 miles ☐ 25 miles ☐ 50 miles

[Search](#)

The map shows various locations in Riverside County, including Rancho Jamona, Fontana, San Bernardino, Redlands, Yucaipa, Norco, El Cerrito, Temescal Valley, Mead Valley, Perris, Lakeview, Nuevo, Hemet, Valle Vista, San Jacinto, and others. Blue location pins are placed across the map to indicate flu shot locations.

1 STAY IN PLACE



2 MAINTAIN YOUR SPACE



3 COVER YOUR FACE



BANDANA



NECK GAITER



HOMEMADE



MEDICAL MASKS SUCH AS SURGICAL AND N95 MASKS ARE IN SHORT SUPPLY AND NEEDED BY HEALTH CARE PROFESSIONALS.

TO PREVENT SHORTAGES, THE PUBLIC SHOULD AVOID PURCHASING THESE MASKS.

Coping With Stress During Infectious Disease Outbreaks

Riverside University Health System – Behavioral Health supports the behavioral health and wellbeing of Riverside County. We realize that news of the outbreak of an infectious disease can raise concerns and increase the stress of everyday life – even though the location of the outbreak may be far away, and you fully understand that there is a very low risk of getting sick. These are very normal reactions and these concerns can become larger if you have family and friends in parts of the world experiencing the outbreak or if you know of people who are doing extensive travel.

It is important to remember that you need to care for your own physical and mental health at times like this – and that support and resources are available if you feel a need for help or talk to someone.



WHAT YOU CAN DO TO HELP COPE WITH EMOTIONAL DISTRESS

1. Manage Your Stress

- Stay informed. Refer to credible sources for updates on the local situation.
- Stay focused on your personal strengths.
- Maintain a routine.
- Make time to relax and rest.

2. Be Informed and Inform Your Family

- Become familiar with local medical and mental health resources in your community. Attend community meetings for resources/education.
- Avoid sharing unconfirmed news about the infectious disease to avoid creating unnecessary fear and panic.
- Give honest age-appropriate information to children and remember to stay calm; children often feel what you feel.

3. Connect with Your Community

- Keep contact with family and friends.
- Join community and/or faith groups.
- Accept help from family, friends, co-workers and clergy.
- Reach out to neighbors and friends with special needs who may need your help.

4. Reach Out and Help

- If you know someone affected by the outbreak, call them to see how they are doing, and remember to keep their confidentiality.
- Consider an act of kindness for those who have been asked to practice social distancing, such as having a meal delivered or offering to drop off homework at their doorstep.
- Locate and volunteer at a charity or organization near you.
- Encourage friends and family to get involved with you.

5. Be Sensitive

- Avoid blaming anyone or assuming someone has the disease because of the way they look or where they or their families come from.
- An infectious disease is not connected to any racial or ethnic group; speak up in kindness when you hear false rumors or negative stereotypes that foster racism and xenophobia.

Consider seeking professional help if you or a loved one are having difficulty coping.

Be Proactive!

1. Stay informed with information from credible sources.
2. Stay connected with friends, family, and community groups.
3. Help others in need by volunteering and donating time and resources to trusted organizations.
4. Keep a positive attitude

Resources

- [Call 2-1-1](#) referrals for health and social services
- Behavioral Health CARES Line (800) 706-7500
- Substance Use CARES Line (800) 499-3008
- [24/7 Mental Health Urgent Care](#)
 - Riverside (951) 509-2499
 - Palm Springs (442) 268-7000
 - Perris (951) 349-4195

Riverside University Health System - Public Health

www.rivcoph.org/

or call 2-1-1 for more information

COVID-19 Resources

RIVERSIDE COUNTY CORONAVIRUS WEB PAGE

This page has all the latest information – data, numbers, statistics, resources, news releases, videos and more, and is updated daily:

<https://www.rivcoph.org/coronavirus>

RIVERSIDE COUNTY PUBLIC HEALTH DEPARTMENT FACEBOOK PAGE

ARE YOU A BUSINESS OWNER?

<https://rivcoccsd.org/covidbizhelp>

ARE YOU UNEMPLOYED?

<https://www.rivcoworkforce.com/COVID-19Resources.aspx>

ARE YOU A STRESSED?

<https://www.rcdmh.org/Coronavirus>

**County of Riverside
Coronavirus Information Line
Dial: 2-1-1**
General information -- no medical advice